



Re-Imagining Tomorrow... Today



INTRODUCTIONS



Lance Bagstad
Superintendent



Jeff Johnson
High School Principal



David Leapaldt, AIA, CID, LEED AP
Senior Principal Architect



Katie Becker, AIA, LEED GA
K12 Planner

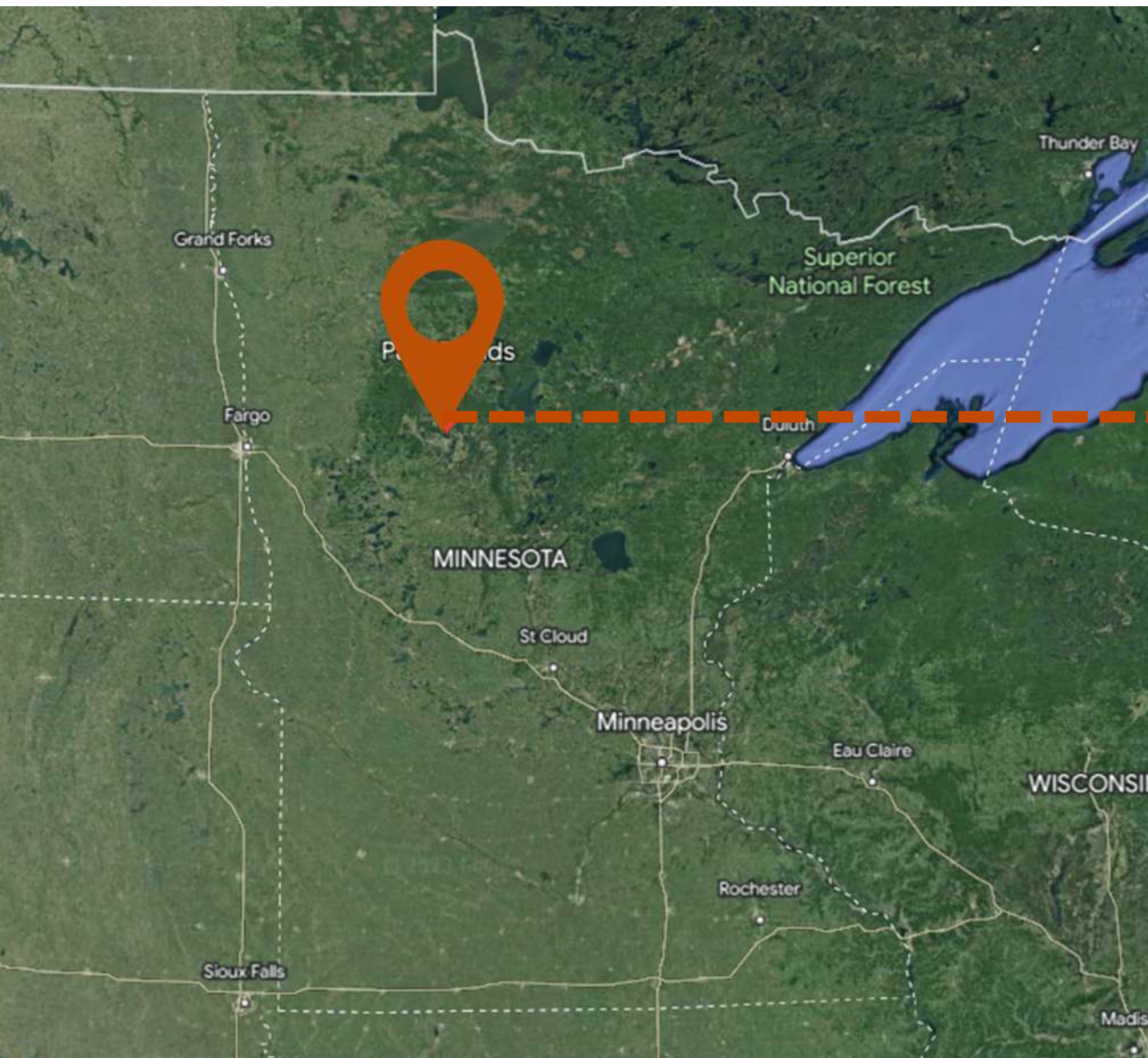
The background image is a grayscale photograph of a school building. In the foreground, there is a sign for 'PARK RAPIDS AREA HIGH SCHOOL' which features a large 'PR' logo and a small graphic of a person. The school building is a two-story brick structure with a large set of glass doors. A flagpole is visible on the left side of the frame. The sky is filled with clouds.

LEARNING OBJECTIVES

- What is shaping the future on education?
- How can you align programming offerings with community values and needs?
- How can you incorporate This Century Educational spaces in older existing schools?

Who is Park Rapids Area School?





Park Rapids, MN

Park Rapids Area Population: 12,366

City of Park Rapids Population: 4,142





Essentia Health



CHI St. Joseph's Health



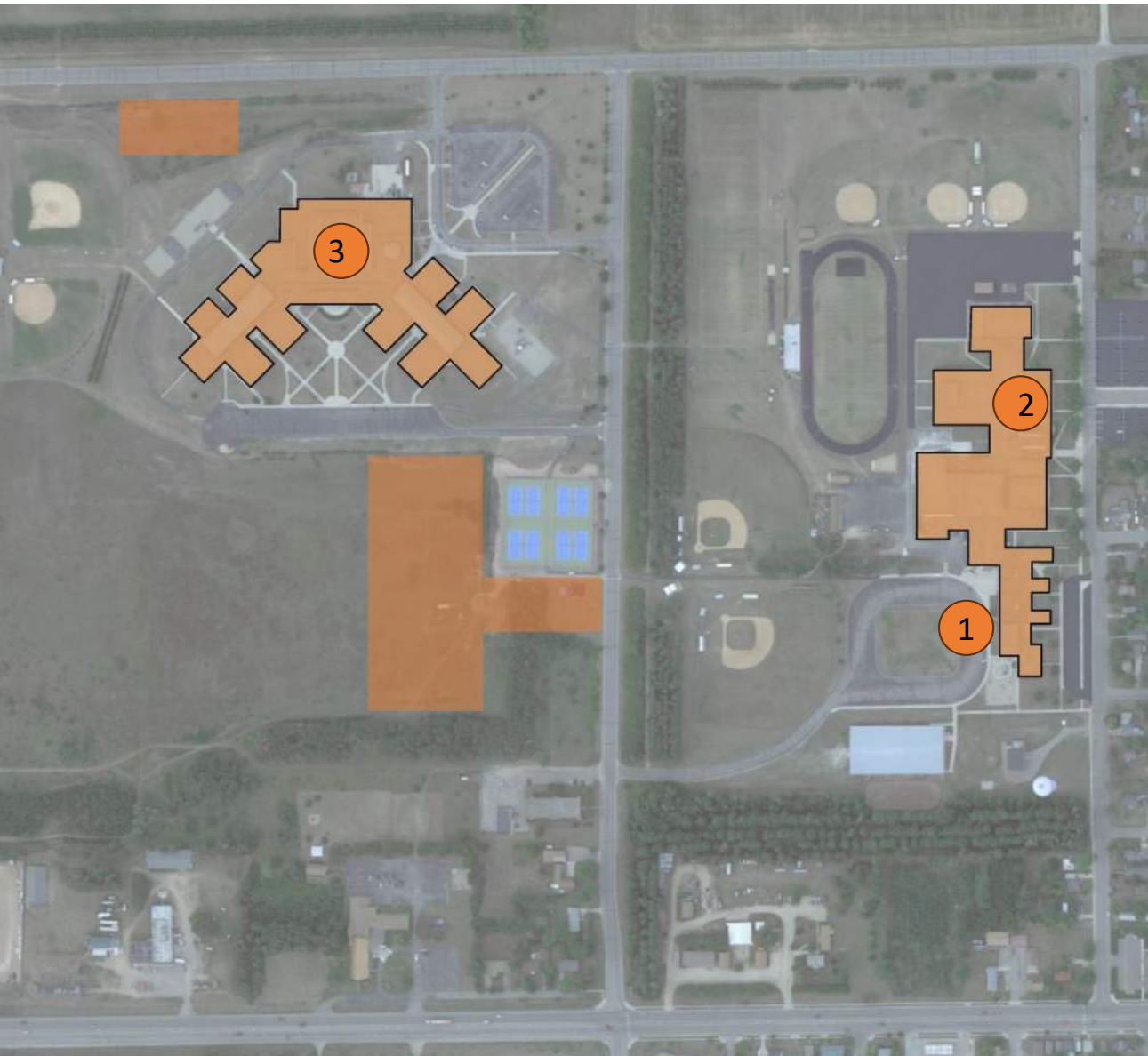
Lamb Weston
RDO FROZEN



Walmart

R.D. OFFUTT
FARMS





School Enrollment: ~1,700 Students

1. Frank White Education Center (EC)

1957 | 38,880 Sq/Ft

2. High School (9-12)

1970 | 195,184 Sq/Ft

3. Century School (K-8)

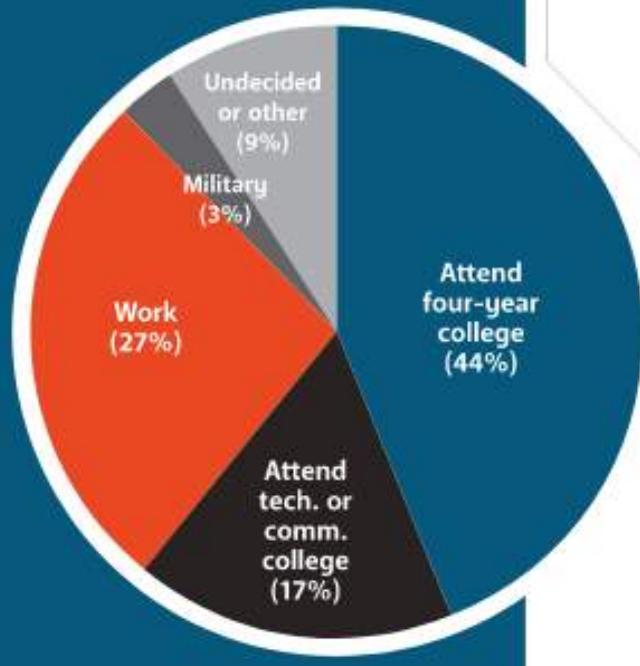
2001 | 264,000 Sq/Ft

Park Rapids K-12 Enrollment Projection to 2028/29

| Grade | 2018/19 | 2019/20 | 2020/21 | 2021/22 | 2022/23 | 2023/24 | 2024/25 | 2025/26 | 2026/27 | 2027/28 | 2028/29 |
|---------------------|---------|---------|---------|---------|---------|---------|---------|---------|---------|---------|---------|
| K | 136 | 135 | 132 | 135 | 132 | 132 | 131 | 135 | 138 | 138 | 138 |
| 1 | 123 | 135 | 134 | 131 | 134 | 131 | 131 | 130 | 134 | 137 | 137 |
| 2 | 126 | 121 | 133 | 132 | 129 | 132 | 129 | 129 | 128 | 132 | 135 |
| 3 | 117 | 130 | 124 | 137 | 135 | 132 | 135 | 132 | 132 | 131 | 135 |
| 4 | 139 | 120 | 134 | 128 | 142 | 139 | 136 | 139 | 136 | 136 | 135 |
| 5 | 124 | 143 | 123 | 137 | 131 | 146 | 143 | 140 | 143 | 140 | 140 |
| 6 | 147 | 121 | 139 | 119 | 133 | 127 | 142 | 139 | 136 | 139 | 136 |
| 7 | 130 | 150 | 123 | 142 | 121 | 135 | 129 | 145 | 142 | 138 | 142 |
| 8 | 155 | 133 | 153 | 126 | 145 | 124 | 138 | 132 | 148 | 145 | 141 |
| 9 | 117 | 158 | 136 | 156 | 129 | 148 | 127 | 141 | 135 | 151 | 148 |
| 10 | 93 | 111 | 150 | 129 | 148 | 122 | 140 | 120 | 134 | 128 | 143 |
| 11 | 97 | 83 | 99 | 135 | 116 | 133 | 110 | 126 | 108 | 121 | 115 |
| 12 | 83 | 82 | 70 | 84 | 115 | 99 | 113 | 94 | 108 | 92 | 103 |
| Total K – 12 | 1,587 | 1,622 | 1,650 | 1,691 | 1,710 | 1,700 | 1,704 | 1,702 | 1,722 | 1,728 | 1,748 |
| K – 6 | 912 | 905 | 919 | 919 | 936 | 939 | 947 | 944 | 947 | 953 | 956 |
| 7 - 12 | 675 | 717 | 731 | 772 | 774 | 761 | 757 | 758 | 775 | 775 | 792 |

NEARLY HALF

of PRAHS's 2020 graduates immediately began working or pursuing a technical/ community college degree, while about half planned to attend a four-year college.



**IN JUST FIVE YEARS, THE NUMBER OF
TRACKS HAS GROWN FROM 3 TO 22.**



TRACK GROWTH
3 TO 22

- Agriculture
- Art & Design
- Automotive & Aviation Technology
- Business Management
- Childcare & Education
- Construction Trades
- Cosmetology
- Culinary Arts
- Engineering
- Entrepreneurship
- Finance & Accounting
- Fire & Rescue
- Health Care
- Human Services
- Information Technology
- Journalism & Writing
- Law Enforcement
- Leadership & Politics
- Marketing & Media
- Mechanical & Electrical
- Music & Performing Arts
- Natural Resources Management
- Create Your Own

What is shaping education?





What's the most important thing you can
do for your students?



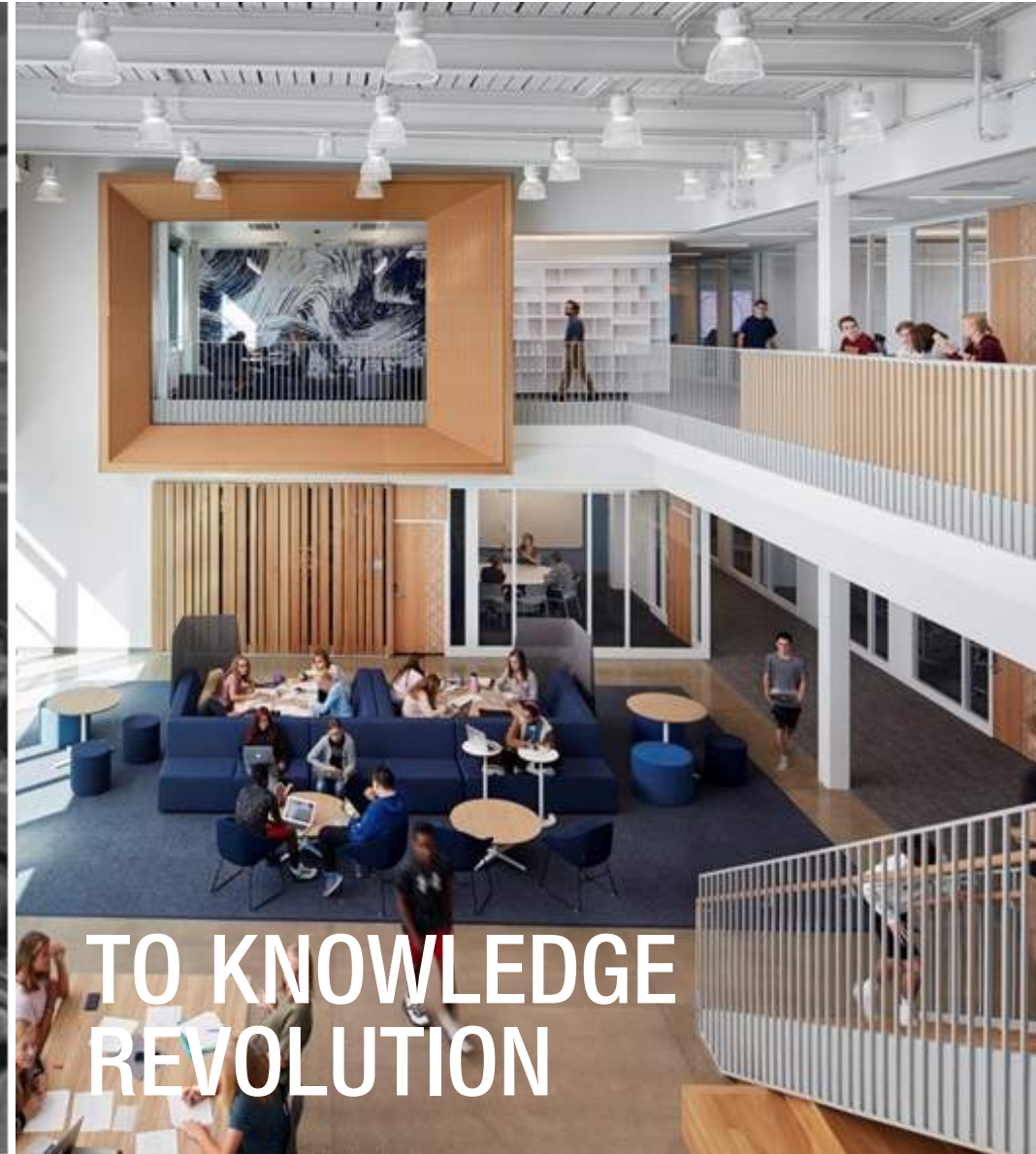
What's the most important thing you can
do for your students?

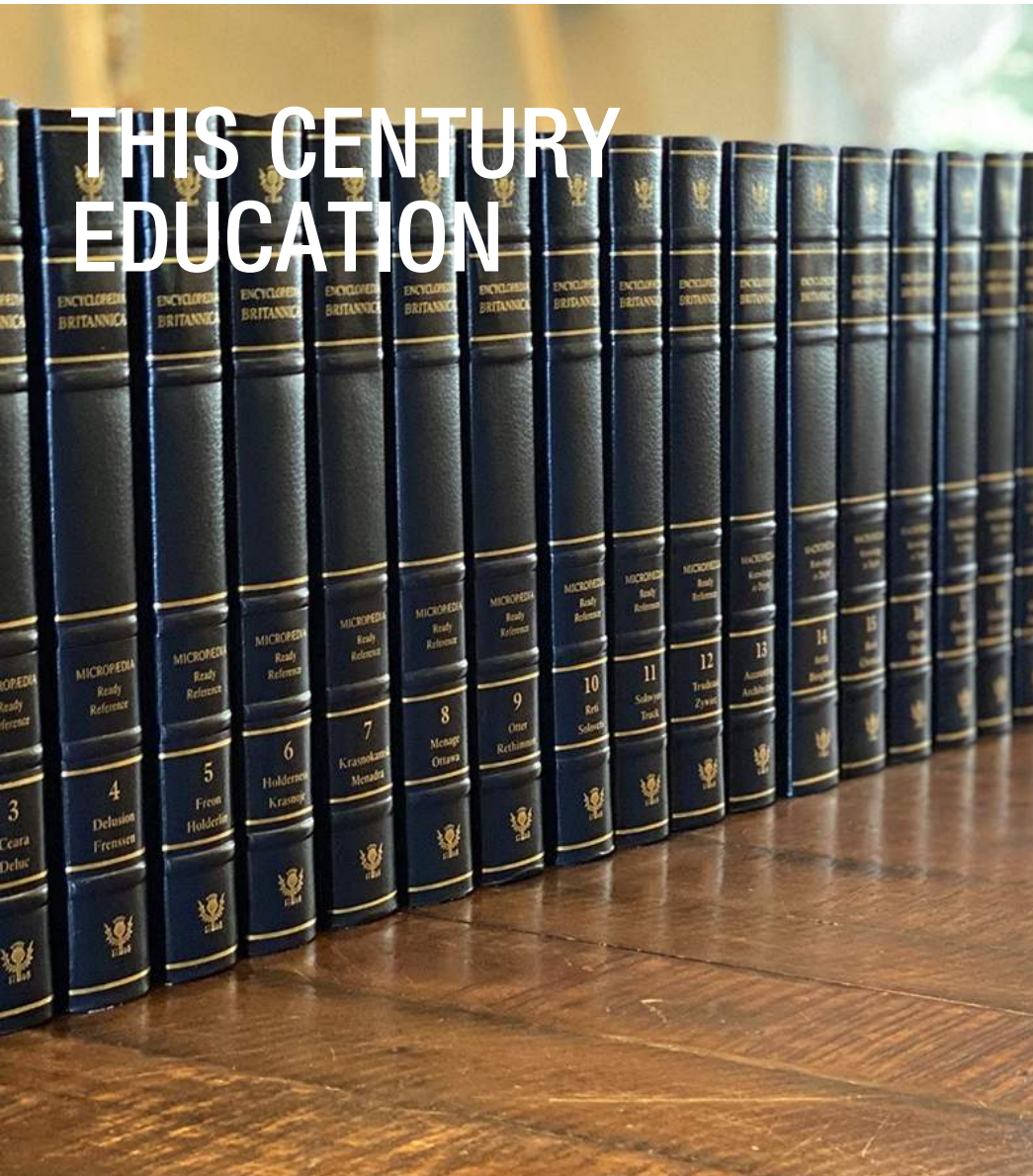
PREPARE THEM FOR THEIR FUTURE

FROM INDUSTRIAL REVOLUTION



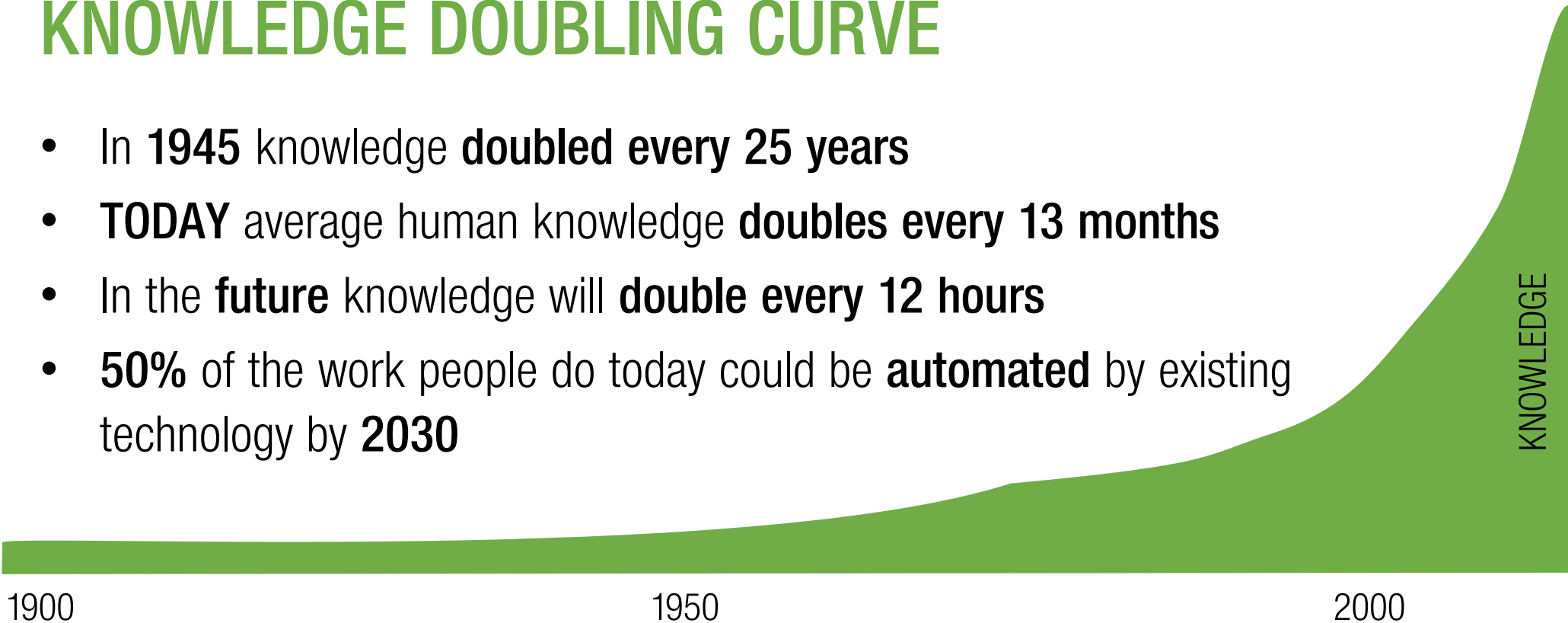
TO KNOWLEDGE REVOLUTION





KNOWLEDGE DOUBLING CURVE

- In **1945** knowledge **doubled every 25 years**
- **TODAY** average human knowledge **doubles every 13 months**
- In the **future** knowledge will **double every 12 hours**
- **50%** of the work people do today could be **automated** by existing technology by **2030**



THIS CENTURY SKILLS

- ✓ Critical Thinking
- ✓ Creativity / Innovation
- ✓ Communication
- ✓ Collaboration

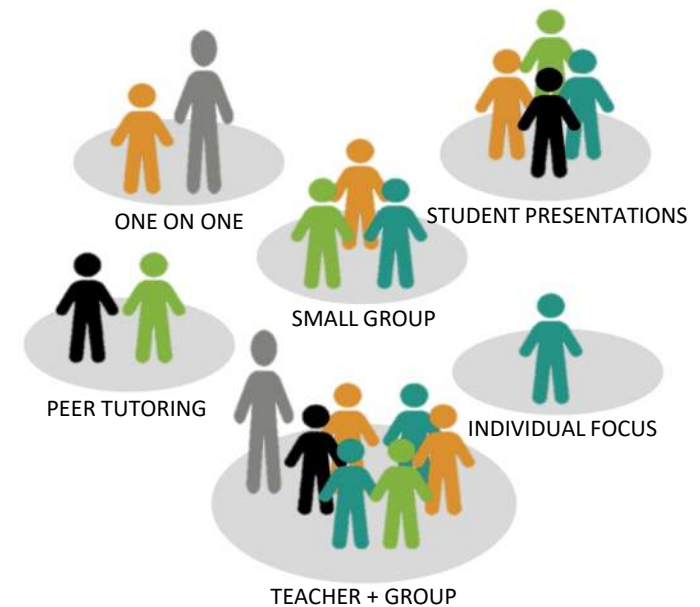


EDUCATIONAL PHILOSOPHIES



✓ **Learning is Personal** – mass customization of learning

✓ **Learning Happens Everywhere** – formal and informal



EDUCATIONAL PHILOSOPHIES

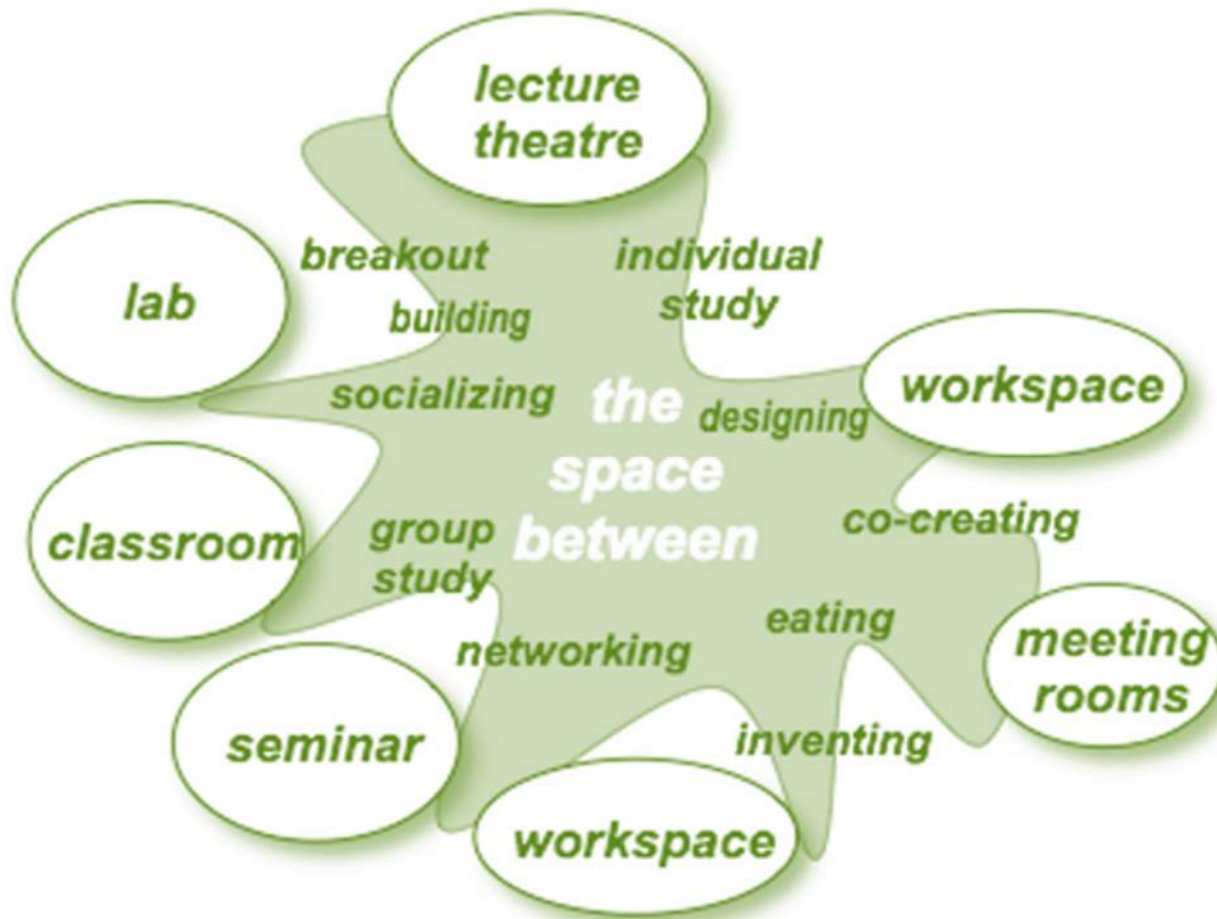
- ✓ **Learning is Personal** – mass customization of learning
- ✓ **Learning Happens Everywhere** – formal and informal
- ✓ **Flexibility and Adaptability** – of both space and furniture
- ✓ **Technology** – seamless, ubiquitous



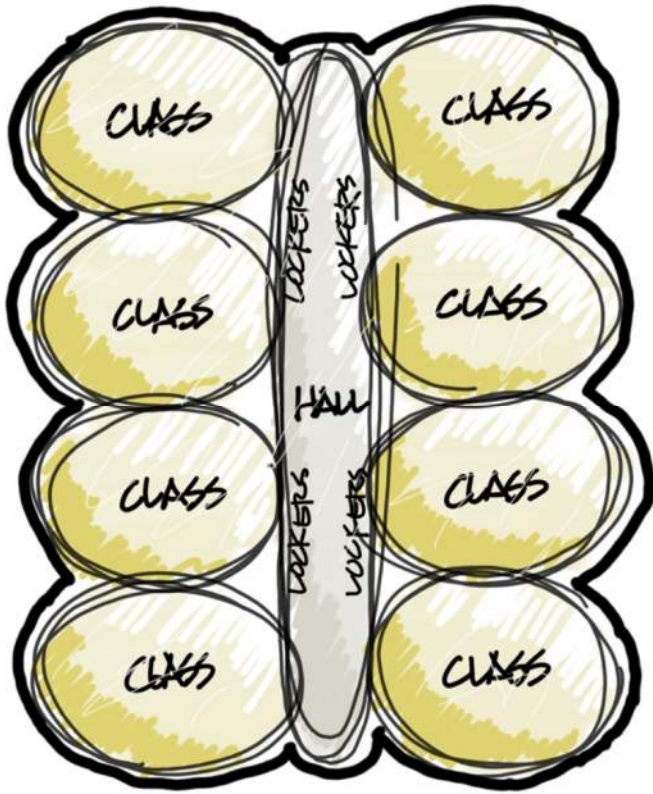
EDUCATIONAL PHILOSOPHIES

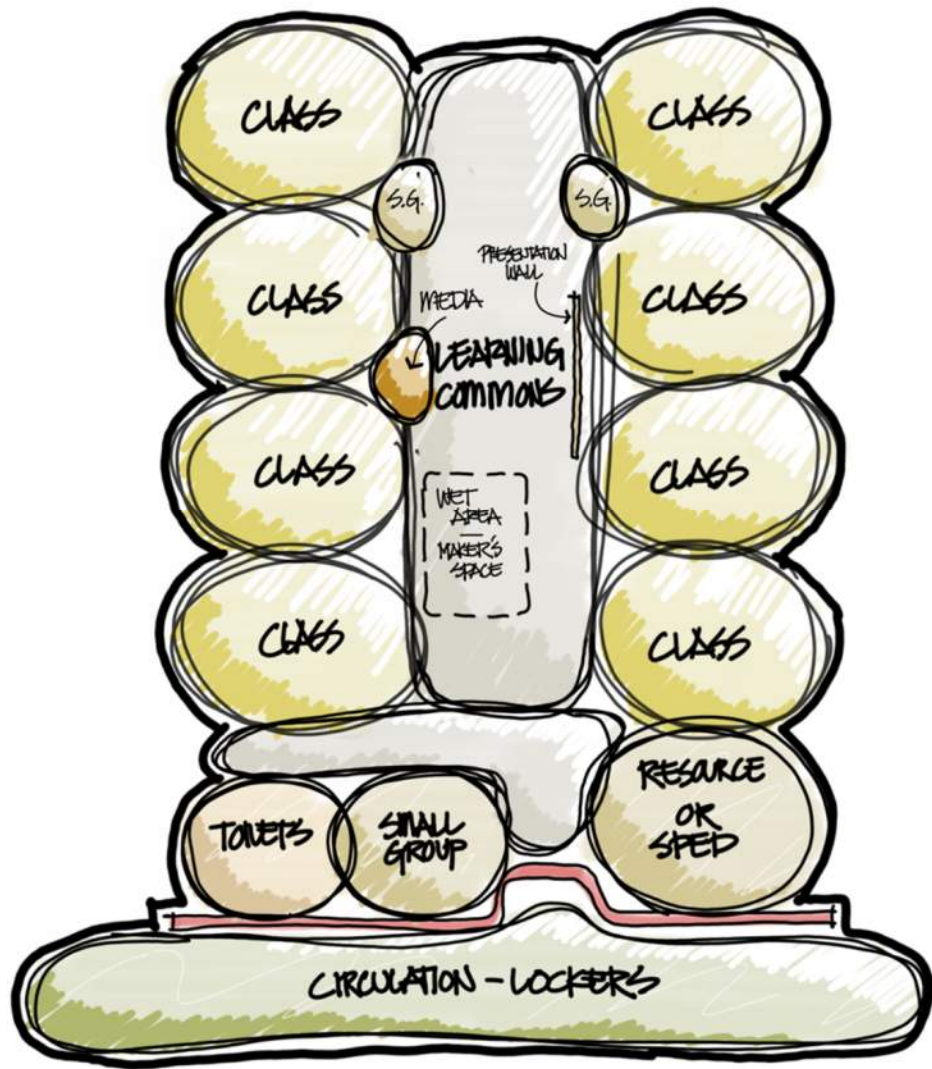
- ✓ **Learning is Personal** – mass customization of learning
- ✓ **Learning Happens Everywhere** – formal and informal
- ✓ **Flexibility and Adaptability** – of both space and furniture
- ✓ **Technology** – seamless, ubiquitous
- ✓ **Collaboration** – students need to see adults model working together
- ✓ **Project Based Learning** – relevant, engaging





**MAXIMIZE
THE SPACE
YOU HAVE**







COMMUNICATION

COLLABORATION

CREATIVITY

CRITICAL THINKING



COMMUNICATION

COLLABORATION

CREATIVITY

CRITICAL THINKING

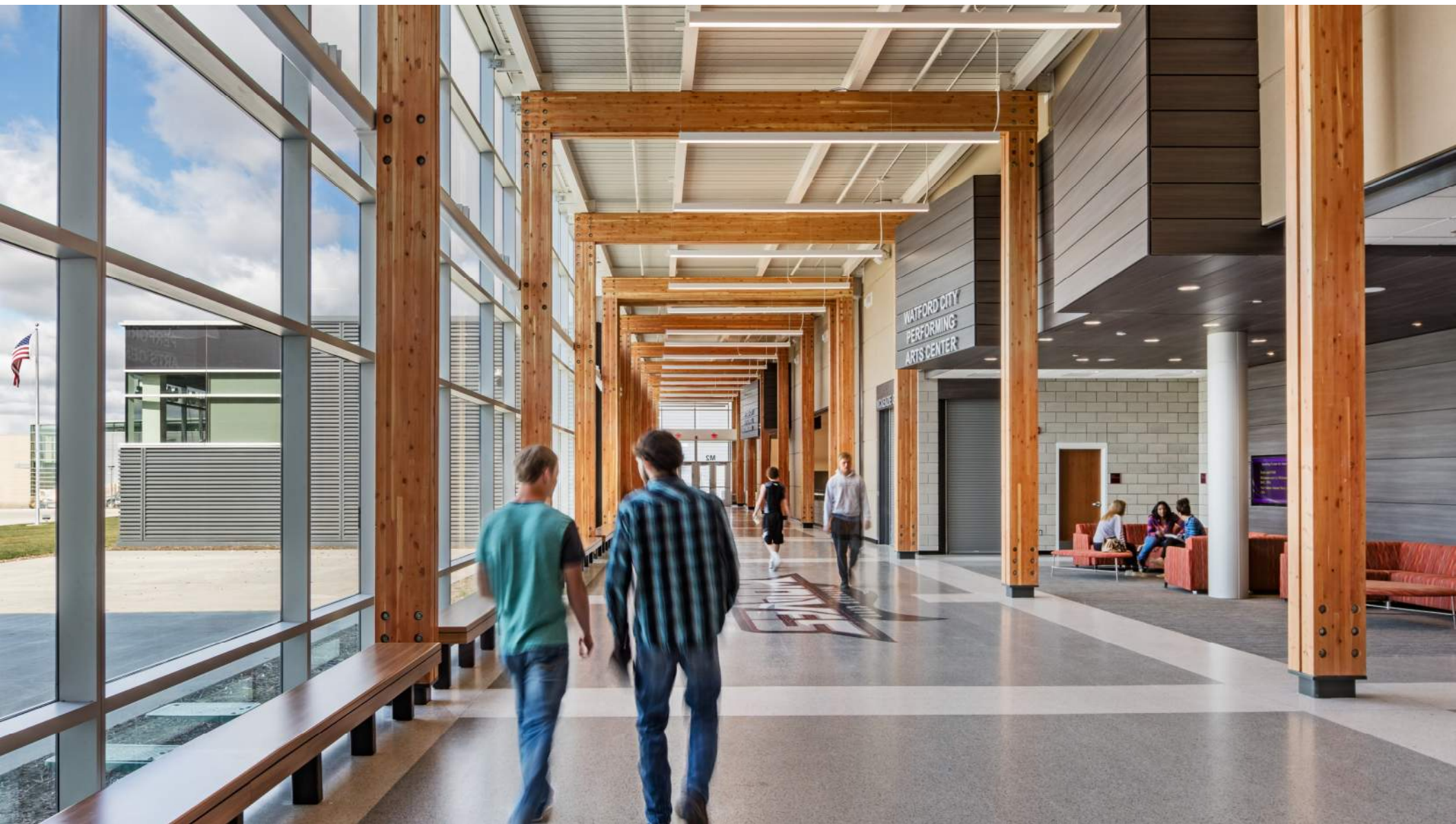


CURIOSITY



CTE is helping to redefine how education is being delivered by:

- encouraging curiosity
- providing opportunities for real world application
- engaging with local communities.



disruptive thinking / 'dis-ruh-p-tiv thing-king/ verb

1 all about thinking differently. Specifically, disruptive thinking is thinking that is so different from the status quo that it completely changes the way a company, market or industry behaves.

PProject 309



PROJECT 309: FOCUS ON 2025



Athens 2004

Right Target?



PROJECT 309: FOCUS ON 2025

- ✓ Athens 2004
- ✓ Doing Things Right.... Doing the Right Things...
 - Family
 - Personal
 - Business

PROJECT 309: FOCUS ON 2025

- ✓ Athens 2004
- ✓ Doing Things Right.... Doing the Right Things...
- ✓ Only as good as the last risk...
Set a goal, plan, implement

BELIEF STATEMENTS

We believe:

- We teach students — not subjects;
- In personalized learning in order for each student to meet his or her individual needs.

Park Rapids Area Schools Strategic Plan | 2019-2024

BELIEF STATEMENTS

We believe:

- Collaboration between the home, the school, and the community has a positive impact on each student.
- A challenging and engaging learning process.
- A focus on a place of learning and relevance.
- We teach students — not subjects.
- We encourage participation in academics, arts, athletics, and service learning opportunities.
- Integrity, trust, compassion, and open communication are the foundation of successful educational community.
- We cultivating high expectations, critical respect, encouragement, and promoting diversity, and
- We providing learning models that enable us to meet the needs of all students.

MISSION STATEMENT

- The mission of the Park Rapids Area Schools is:
- To prepare today's students for tomorrow's challenges.

VISION STATEMENT

- The vision of the Park Rapids Area Schools is:
- To be a leading school district recognized as innovative and transformational.



VISION STATEMENT

The vision of the Park Rapids Area Schools is:

- To be a leading school district recognized as innovative and transformational.

2. We will increase the academic achievement of all students through individualized instruction, a challenging and engaging curriculum, and aligned assessments.

2.1 By 2020-2021, establish and put in place a process to identify strengths and interests of students to help guide them to career opportunities.

2.2 By 2020-2021 implement a plan to increase learning opportunities for students through the creation of flexible learning spaces, problem-based education, personalized learning, and varied career pathways.

2.3 By 2022-2023, outperform state, regional, and comparable districts on state accountability and college-ready assessment measures.

| FOCUS AREA | GOALS | OBJECTIVES |
|---------------------|--|--|
| STUDENT ACHIEVEMENT | 1. We will achieve the goals of the World's Best Workforce for all students in the school or in school team. | 1.1 Annually evaluate the success of meeting the five goals of the WBIW. • All students reading at grade level by third grade. • Closing the achievement gap for identified student groups. • All students graduating career and college ready. • All students graduating on time. |
| | 2. We will increase the academic achievement of all students through individualized instruction, a challenging and engaging curriculum, and aligned assessments. | 2.1 By 2020-2021, establish and put in place a process to identify strengths and interests of students to help guide them to career opportunities. 2.2 By 2020-2021 implement a plan to increase learning opportunities for students through the creation of flexible learning spaces, problem-based education, personalized learning, and varied career pathways. 2.3 By 2022-2023, outperform state, regional, and comparable districts on state accountability and college-ready assessment measures. |
| STUDENT SUPPORT | 3. We will meet the needs of all students. | 3.1 By 2019-2020, develop and implement a process to assess support and expand academic, social, and emotional student support programs. 3.2 By 2020-2021, audit the effectiveness of current ELL programs and develop and implement plans to address identified deficiencies. 3.3 By 2020-2021, implement in-house mental health programming designed to support all identified students needing assistance. 3.4 By 2022-2023, create plan to continually assess safety programming and address identified needs based on the assessments. |
| WORKFORCE/STAFFING | 4. We will recruit, hire, and retain the highest quality professionals for every position in the school district. | 4.1 By 2019-2020, develop a comprehensive plan to attract quality professionals. 4.2 By the 2019-2020 school year, ensure growth of staff through continuing professional development and mentoring programs. 4.3 By 2019-2020, identify and implement a system to periodically measure staff feedback on maintaining and sustaining a positive working environment. |

| FOCUS AREA | GOALS | OBJECTIVES |
|------------|--|--|
| TECH | 5. We will ensure that the facilities and infrastructure of the school district are: | 5.1 By 2020-2021, implement a plan to assess district and community needs to the current facilities and recreation spaces. 5.2 By 2021-2022, implement a specific plan for updating and/or expanding facilities and recreation spaces to meet district and community needs. |
| ACADEMICS | 6. We will ensure that the facilities and infrastructure of the school district are: | 6.1 By 2020-2021, implement a plan to assess district and community needs to the current facilities and recreation spaces. 6.2 By 2021-2022, implement a specific plan for updating and/or expanding facilities and recreation spaces to meet district and community needs. |

8. We will provide and support innovative learning and teaching opportunities.

8.1 By 2022-2023, identify and enact teaching and learning practices that ensures students graduate with the critical thinking, collaboration, communication, and creativity skills needed to be life ready.



Next Century Learning

The diagram is shaped like a classical building. The roof is an orange triangle containing the title 'Next Century Learning'. Below the roof are five grey rectangular columns. The first column is labeled 'Community Participation', the second 'Technology', the third 'Flexibility', the fourth 'Collaborative', and the fifth 'Citizenship'. At the base of the columns are three rows of black rounded rectangles. The first row has four items: 'Relationships', 'Personalized', 'Authentic', and 'Diverse'. The second row has four items: 'Inclusive', 'Digital Learning', 'Instructional Tools', and 'Post-Secondary Career Planning'. The third row has four items: 'Building Design', 'Programming', 'Resources', and 'Internships'.

Community
Participation

Technology

Flexibility

Collaborative

Citizenship

Relationships

Personalized

Authentic

Diverse

Inclusive

Digital Learning

Instructional Tools

Post-Secondary
Career Planning

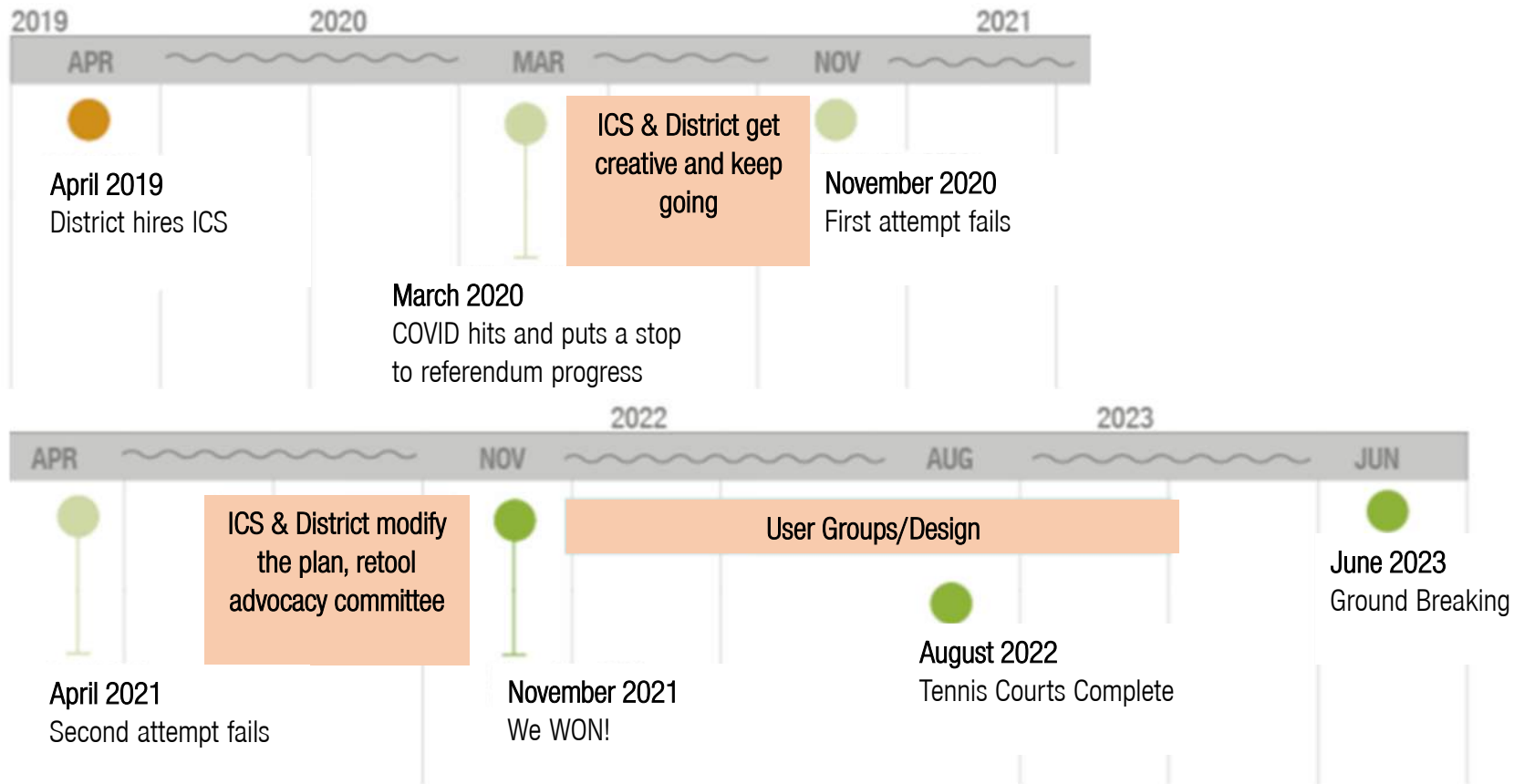
Building Design

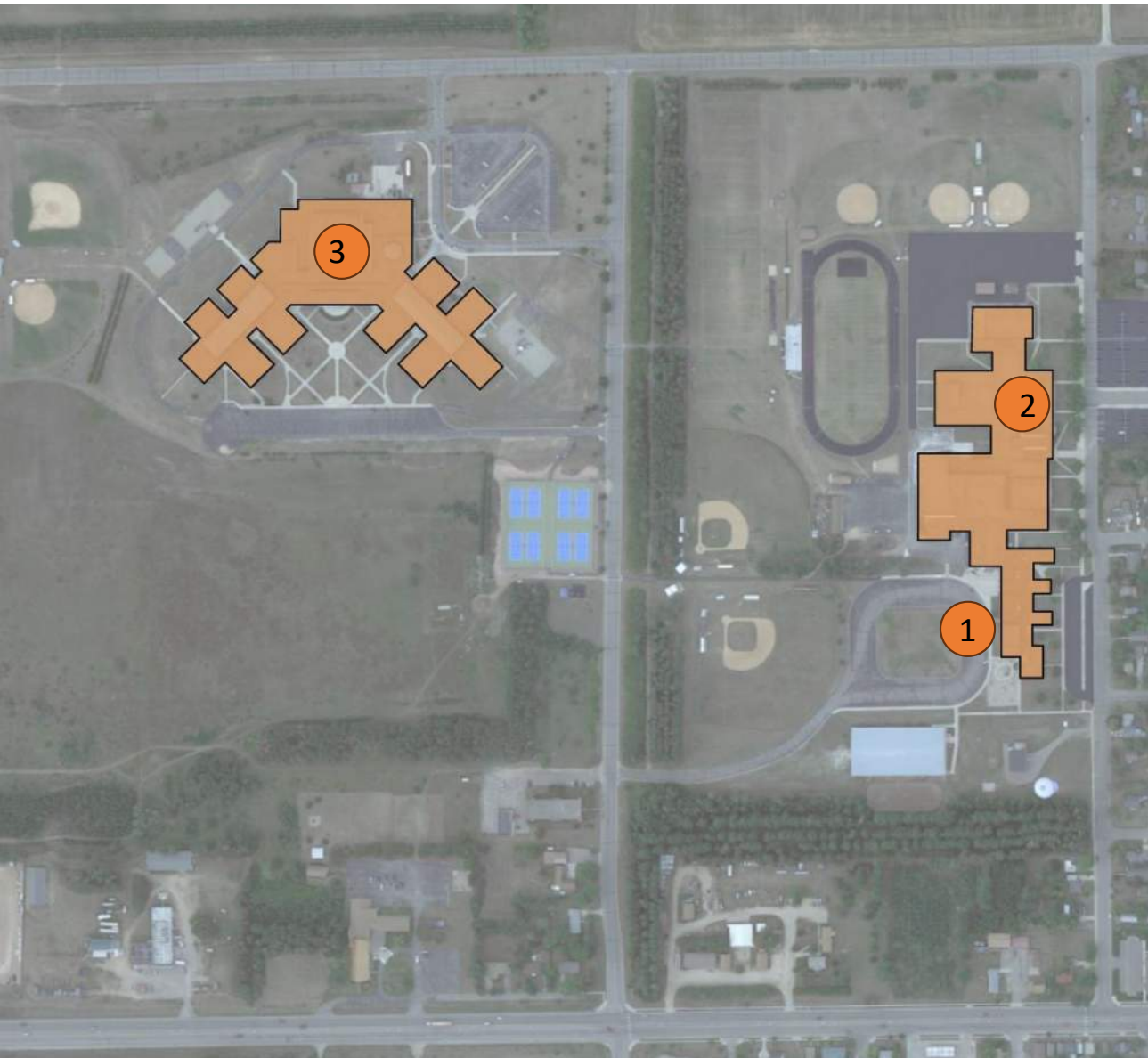
Programming

Resources

Internships

PROJECT 309 TIMELINE





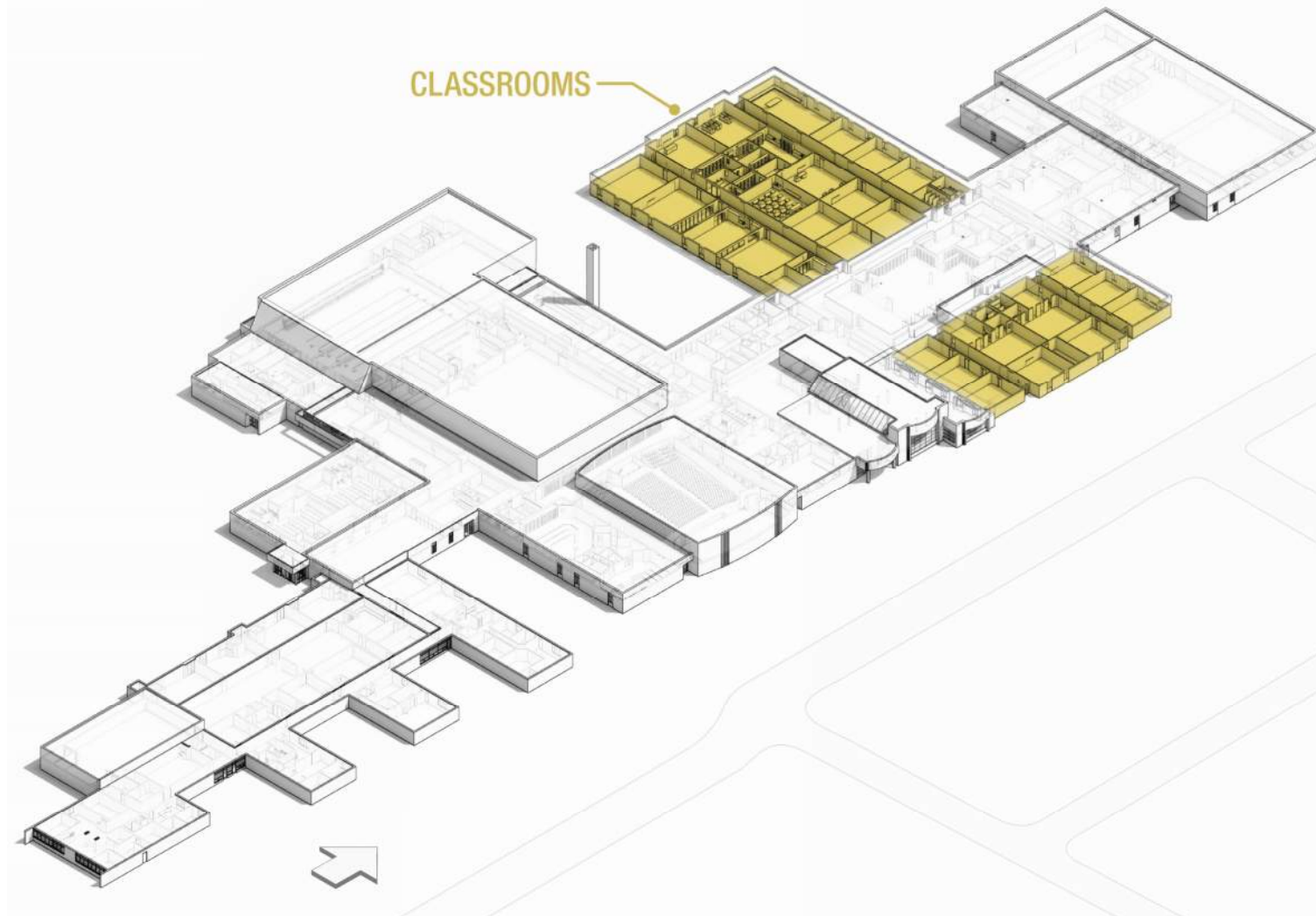
EXISTING CONDITIONS

| ICS A LEISURE GROWTH | | HS CURRENT | HS AFTER | ELEM. CURRENT | ELEM. AFTER |
|-------------------------|--|---------------|-------------|------------------|----------------|
| ➔ | 1 Classroom Size and Suitability | R | G | G | G |
| | 2 Cafeteria/Kitchen/Serving | Y | G | G | G |
| ➔ | 3 Security and Supervision | R | G | R | G |
| | 4 Main Office/Nurse/Support Services | Y | G | G | G |
| | 5 Science Classrooms/Labs | R | G | NA | NA |
| | 6 Art Classrooms/Labs | Y | G | | |
| ➔ | 7 Music Classrooms/Practice Areas/Etc. | R | G | G | G |
| | 8 Staff Work/Collaborative Planning Areas | R | G | Y | G |
| ➔ | 9 Student Commons/Break-Out Areas | Y | G | R | G |
| | 10 Phy Ed./Athletics/Gym/Locker Rooms/Pool Etc. | R | G | G | G |
| | 11 Site Suitability: Fields/Green Space/Storage Etc. | G | G | Y | G |
| ➔ | 12 Parking/Bus Drop-Off: Staff/Students/Parents | G | G | R | G |
| | 13 Technology | Y | G | Y | G |
| | 14 Library/Media Center: Location/Size/Layout | G | G | G | G |
| | 15 Special Education/Support Services | Y | G | G | G |
| | 16 Auditoriums/Performing Arts Spaces | Y | G | NA | NA |
| | 17 Career and Technical Education | Y | G | NA | NA |
| ➔ | 18 Hallways/Lockers/Washrooms/Maint. space | R | G | G | G |
| | ADDITIONAL SPACE TO ACCOMMODATE EXPECTED GROWTH | R | G | R | G |



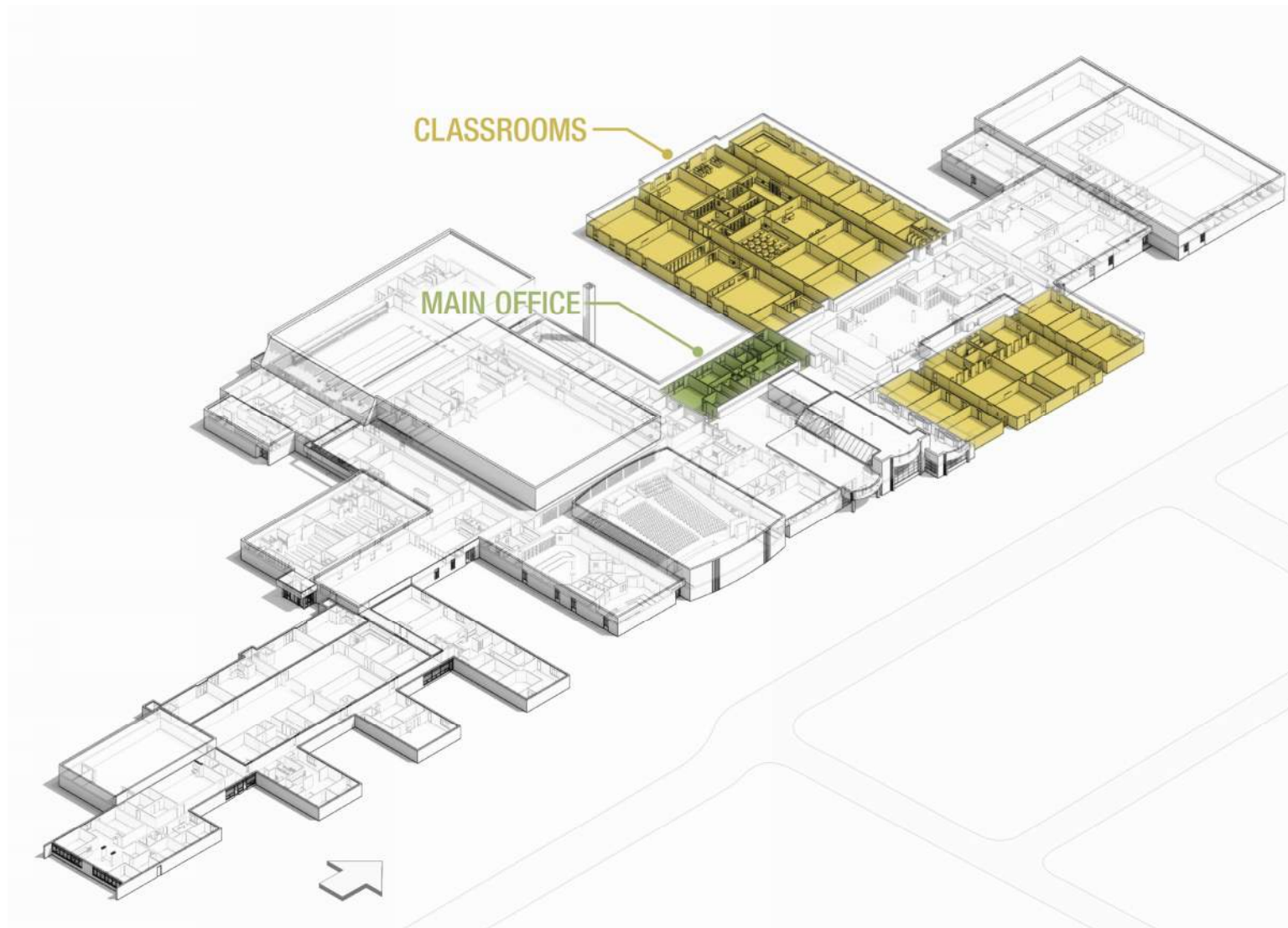
- **CLASSROOM WING**

- Single loaded corridor
- Buried rooms
- Small size



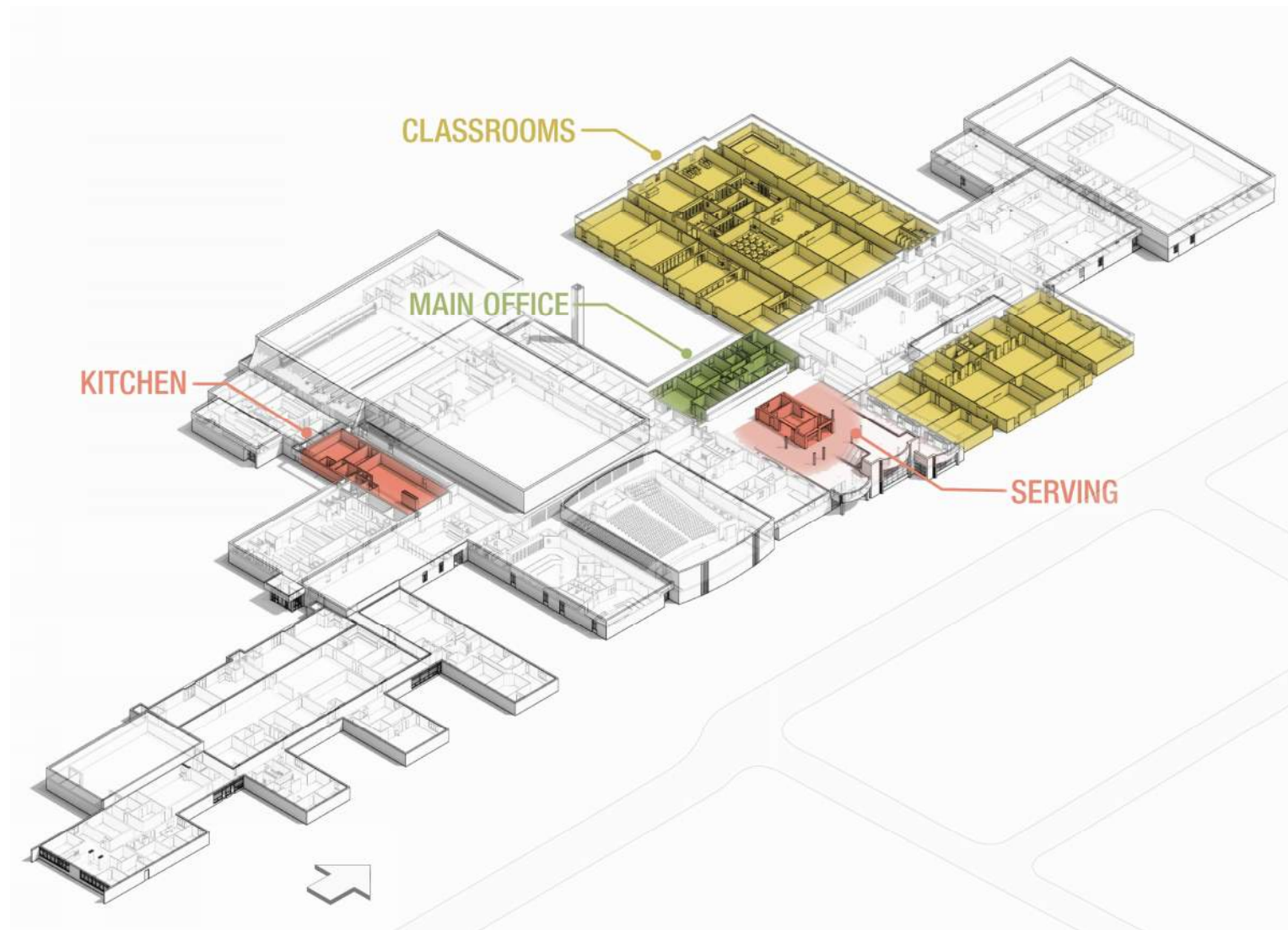


- CLASSROOM WING
- MAIN OFFICE
 - Interior location
 - Not secure



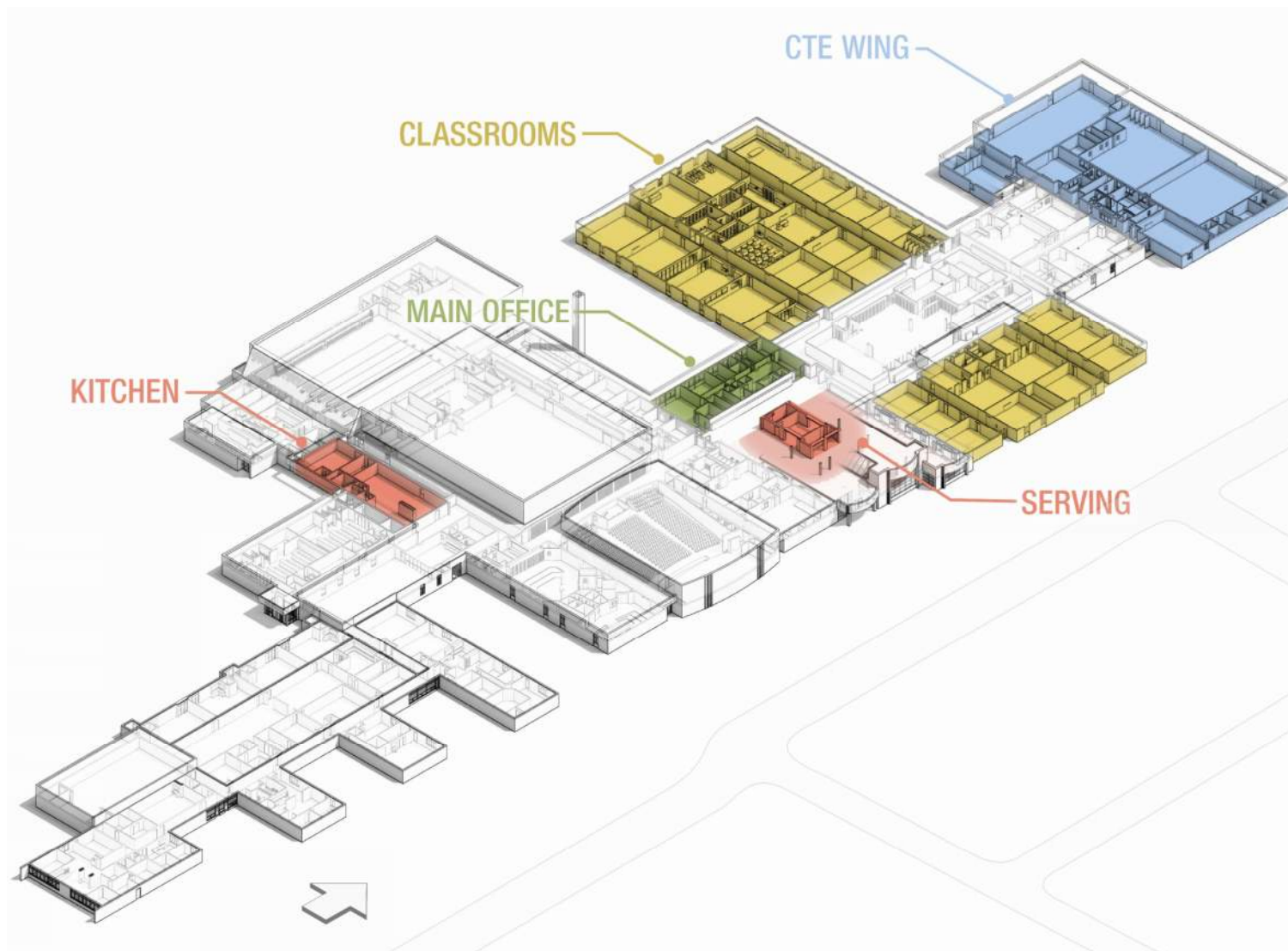


- CLASSROOM WING
- MAIN OFFICE
- **KITCHEN/CAFETERIA**
 - Separated
 - Travel required



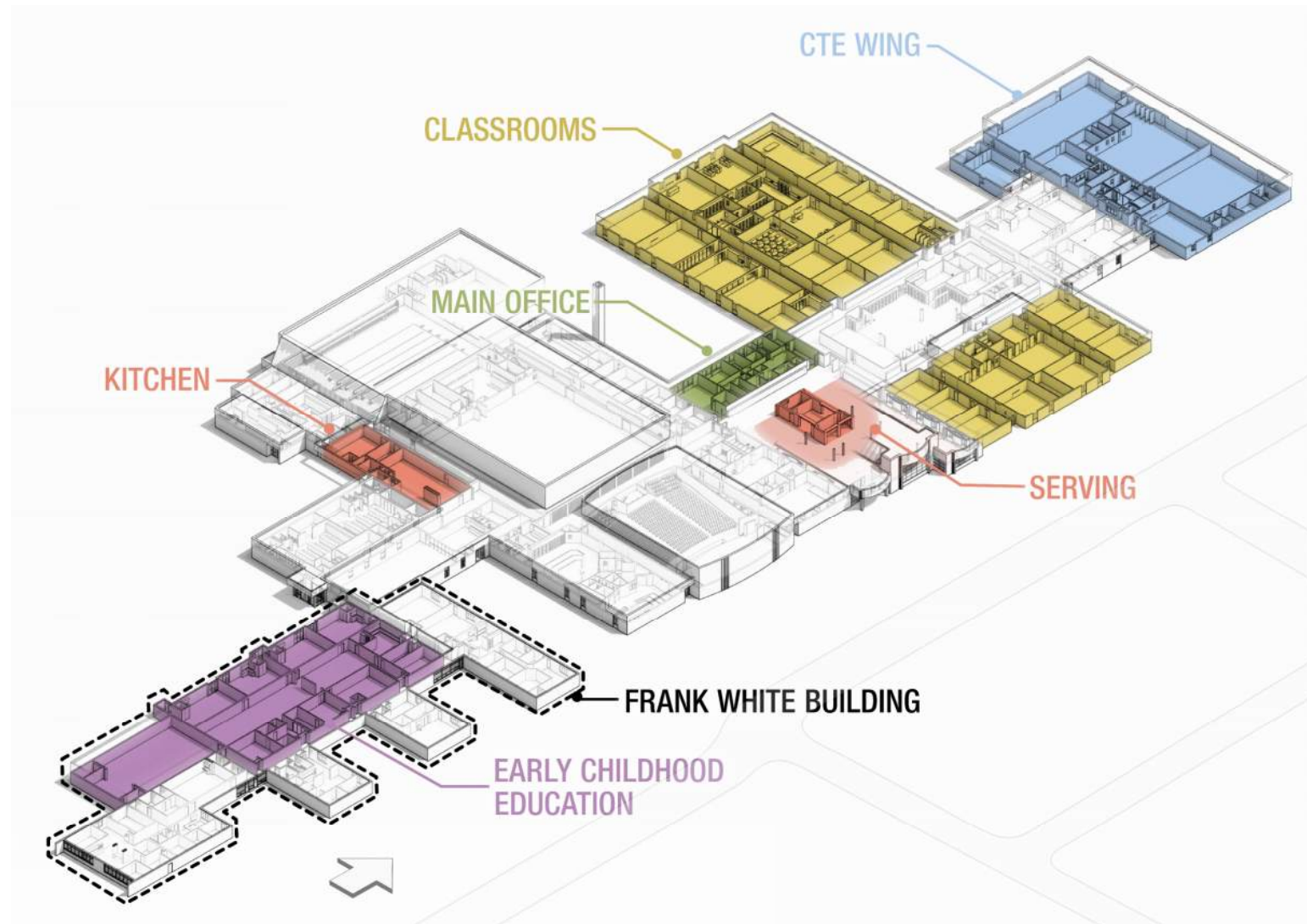


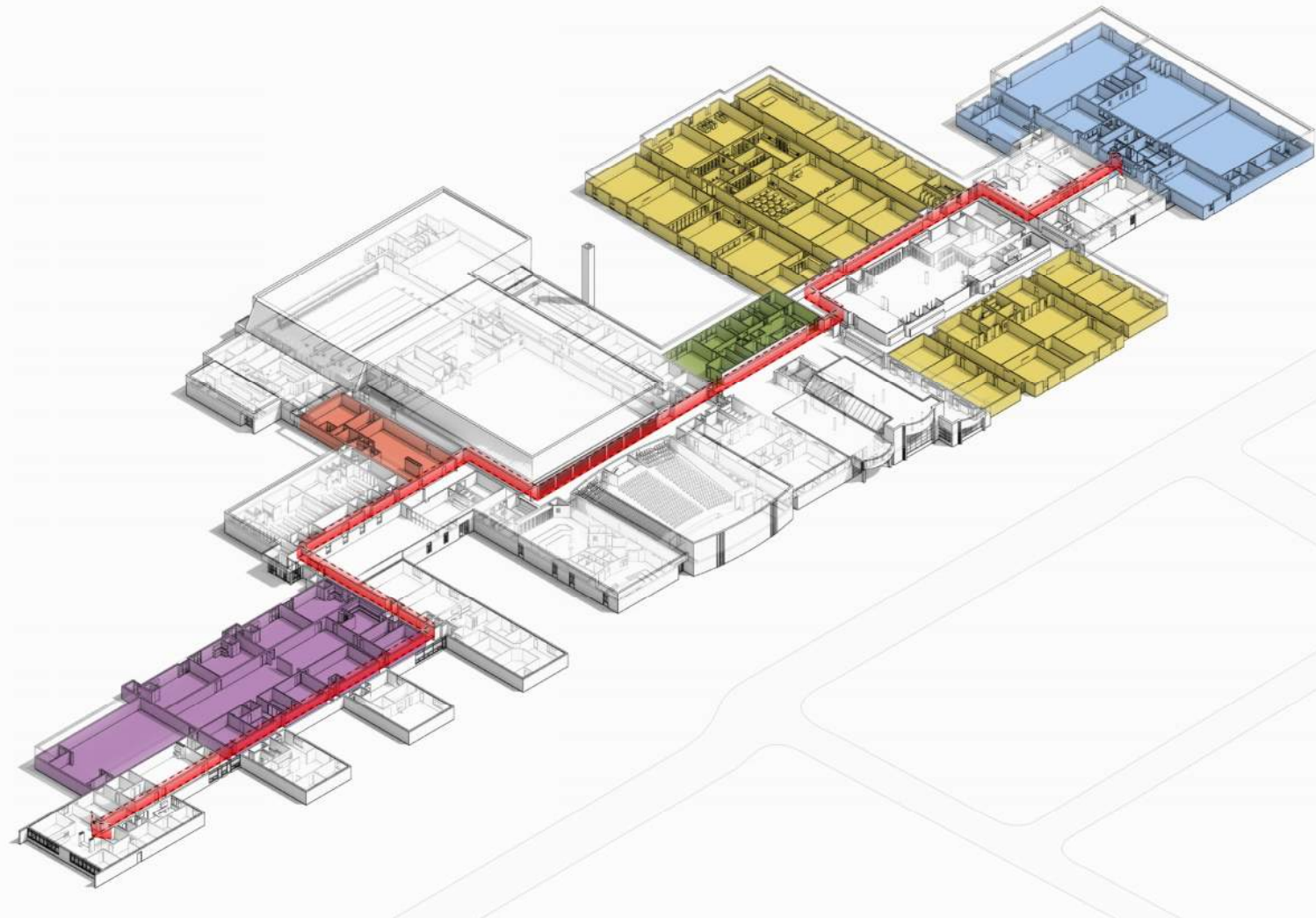
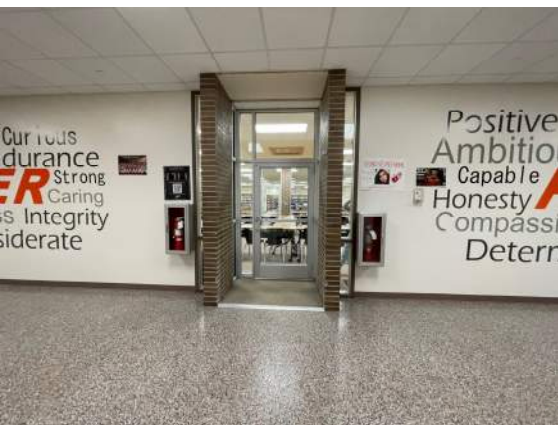
- CLASSROOM WING
- MAIN OFFICE
- KITCHEN/CAFETERIA
- CTE WING
 - Dead end location
 - Buried





- CLASSROOM WING
- MAIN OFFICE
- KITCHEN/CAFETERIA
- CTE WING
- **EARLY CHILDHOOD/
FRANK WHITE**
 - Grade configuration
 - Bad bones





THE PLAN



**IMPROVE
BUILDING
SECURITY**

**RENOVATE &
EXPAND THE
HIGH SCHOOL**

**ADD SPACE
FOR CTE**

CTE AT PARK RAPIDS AREA SCHOOLS

Extensive CTE Offerings:

Business

Industrial Tech Metals

Building Trades

Arts

CTE AT PARK RAPIDS AREA SCHOOLS

✓ Extensive CTE Offerings:

✓ **4C – Community Career Collaboration Coordinator (CCCC)**

Business Supported in 2018

Skills Training For Students

Career Preparation

Community Outreach and Partnership Development

Assist Job and Workforce Development and Placement

Panther Track Advisor

Funding

CTE AT PARK RAPIDS AREA SCHOOLS

- ✓ Extensive CTE Offerings:
- ✓ 4C – Community Career Collaboration Coordinator (CCCC)
- ✓ Focus on Ag. Education:

“Golden Ticket” for CTE

Hired Ag Instructor 2019 to begin building program.

Hired 2nd Ag Instructor in 2020 to expand programming and FFA

Hired 3rd Ag Instructor in 2022 to expand programming into 5-8.

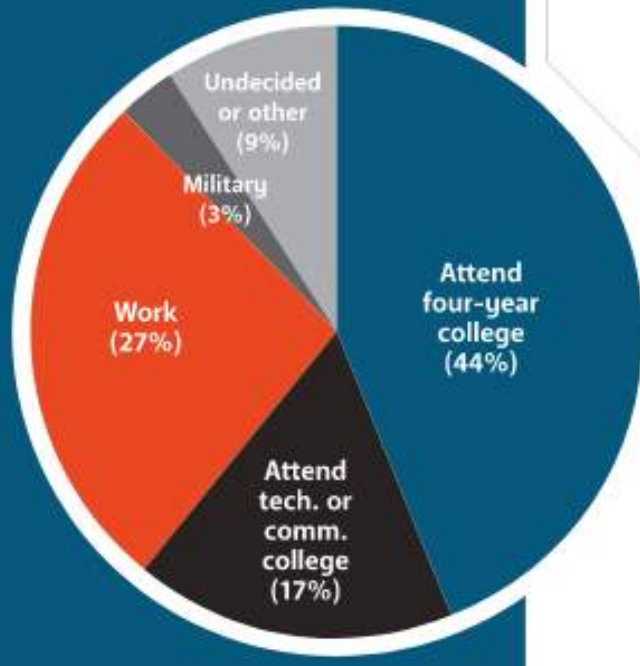
PRoject 309 will provide up to 45 AG course offerings per

Trimester beginning in 2025



NEARLY HALF

of PRAHS's 2020 graduates immediately began working or pursuing a technical/ community college degree, while about half planned to attend a four-year college.



**IN JUST FIVE YEARS, THE NUMBER OF
TRACKS HAS GROWN FROM 3 TO 22.**

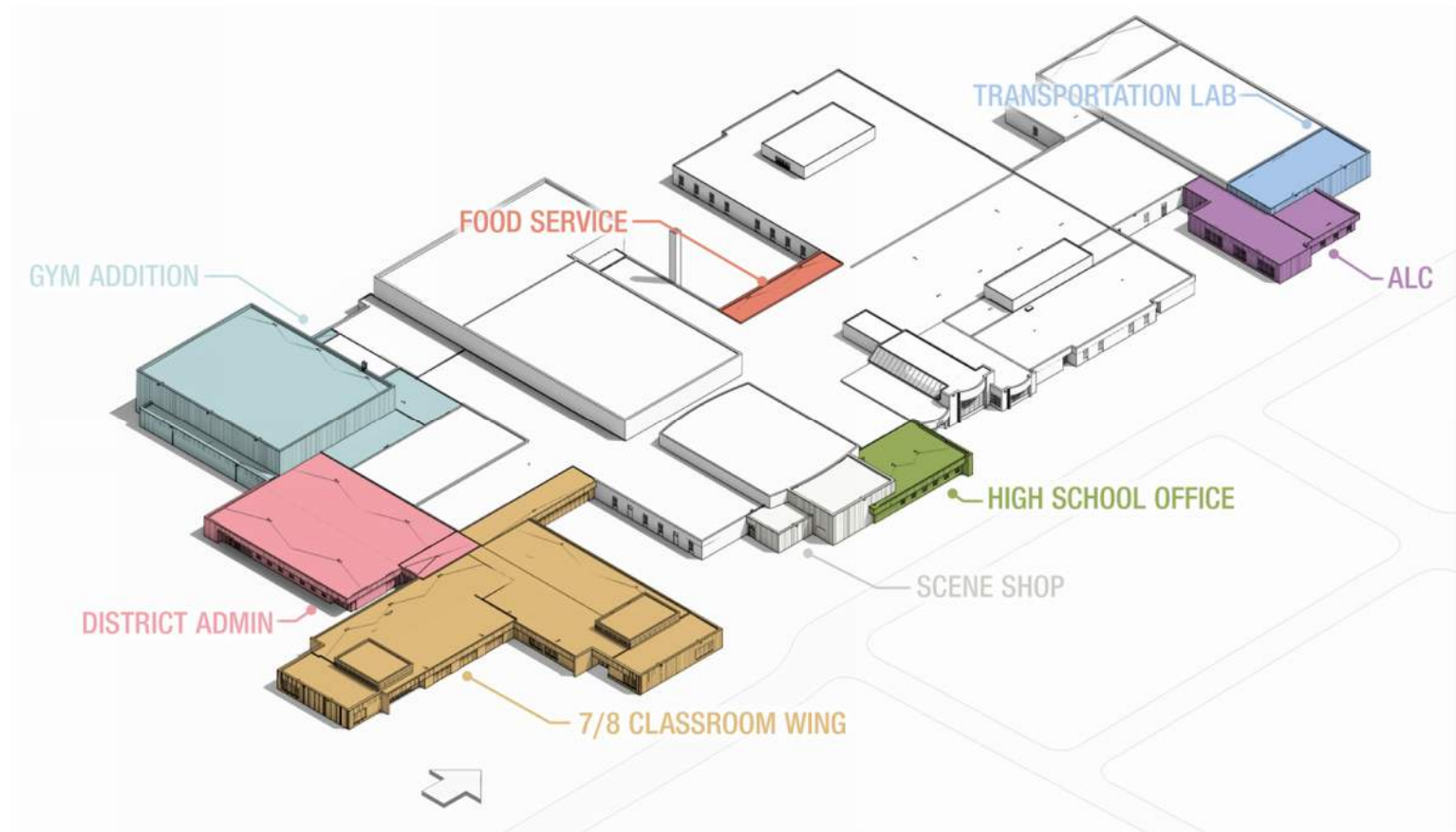


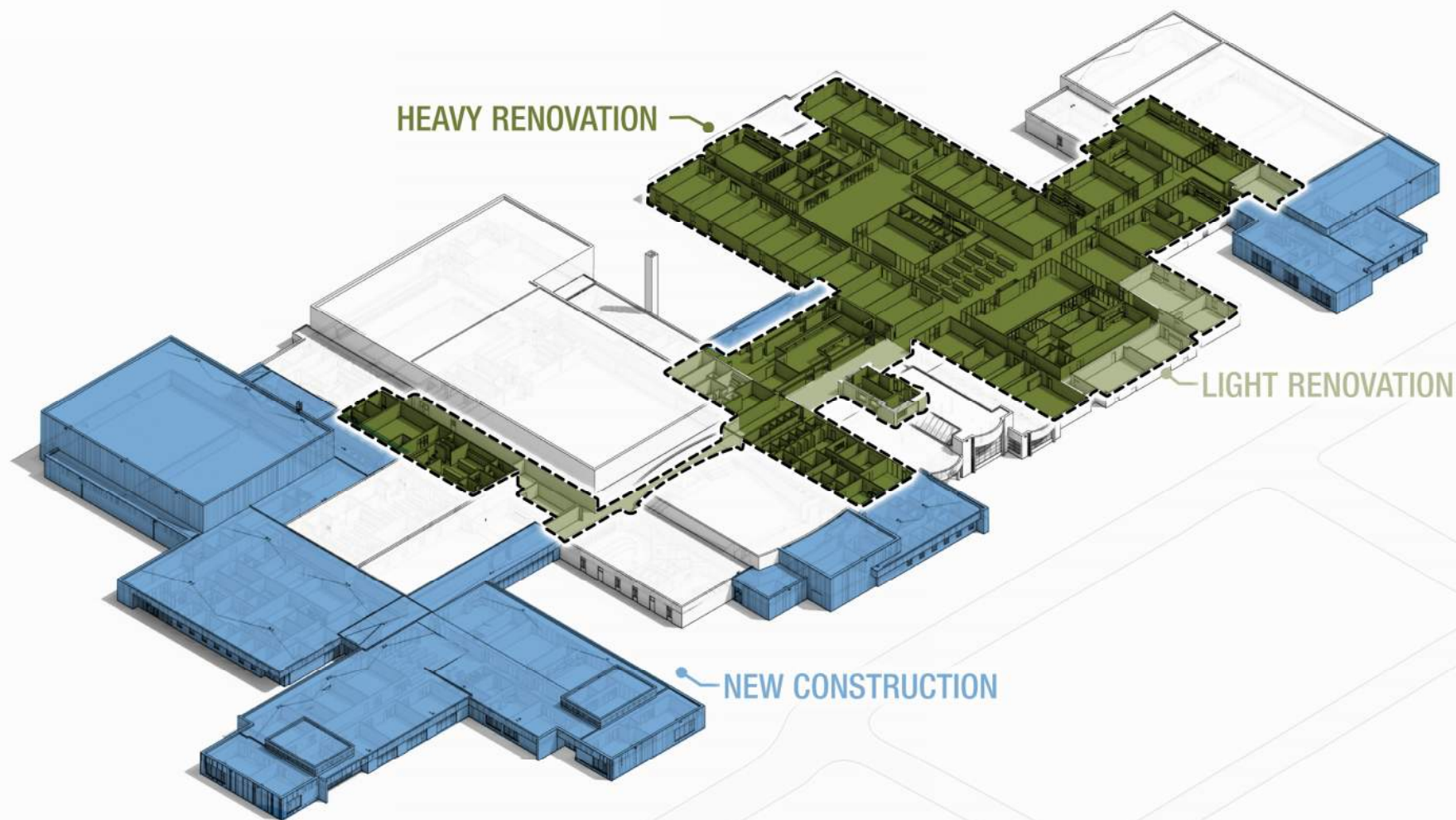
TRACK GROWTH
3 TO 22

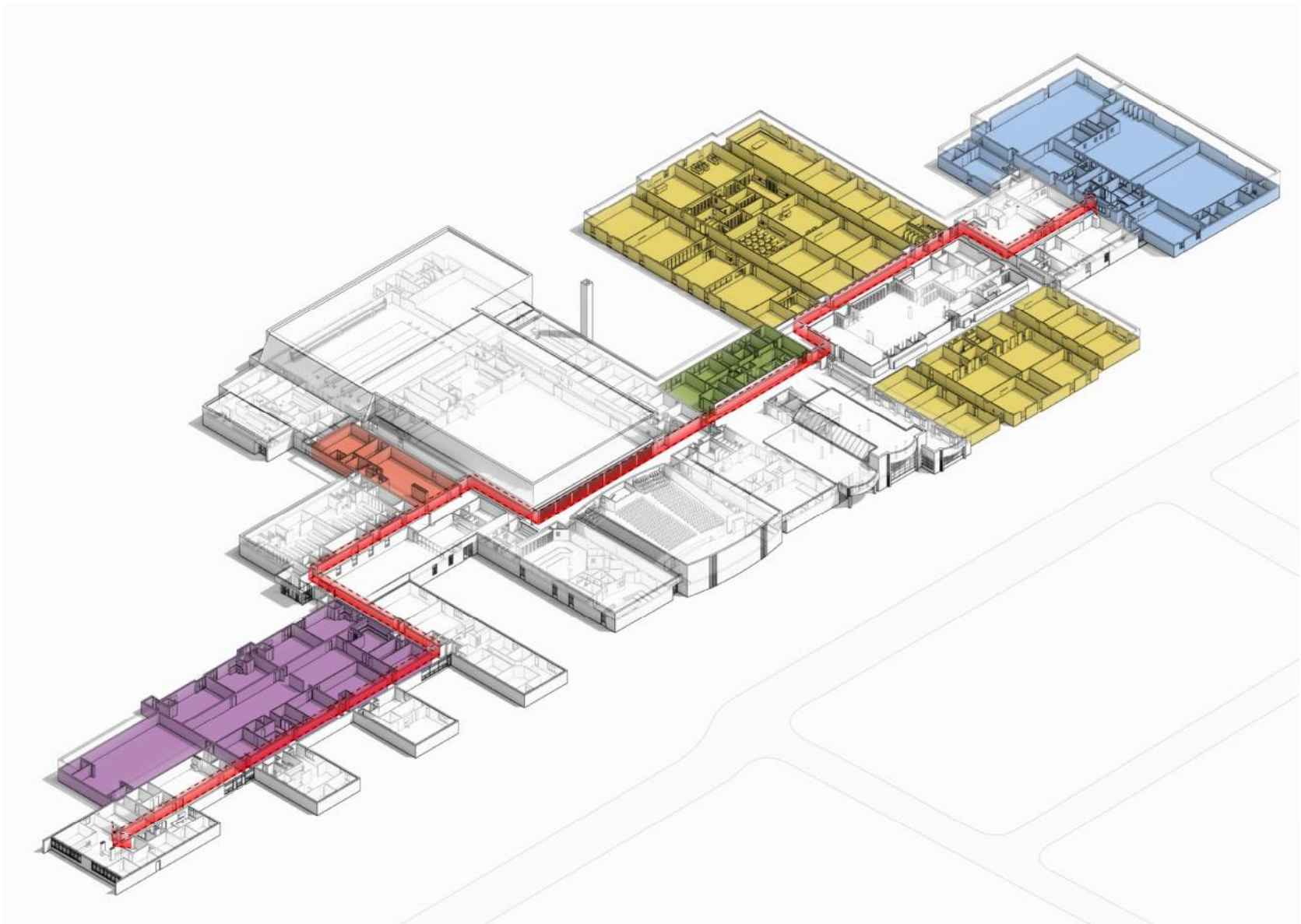
- Agriculture
- Art & Design
- Automotive & Aviation Technology
- Business Management
- Childcare & Education
- Construction Trades
- Cosmetology
- Culinary Arts
- Engineering
- Entrepreneurship
- Finance & Accounting
- Fire & Rescue
- Health Care
- Human Services
- Information Technology
- Journalism & Writing
- Law Enforcement
- Leadership & Politics
- Marketing & Media
- Mechanical & Electrical
- Music & Performing Arts
- Natural Resources Management
- Create Your Own

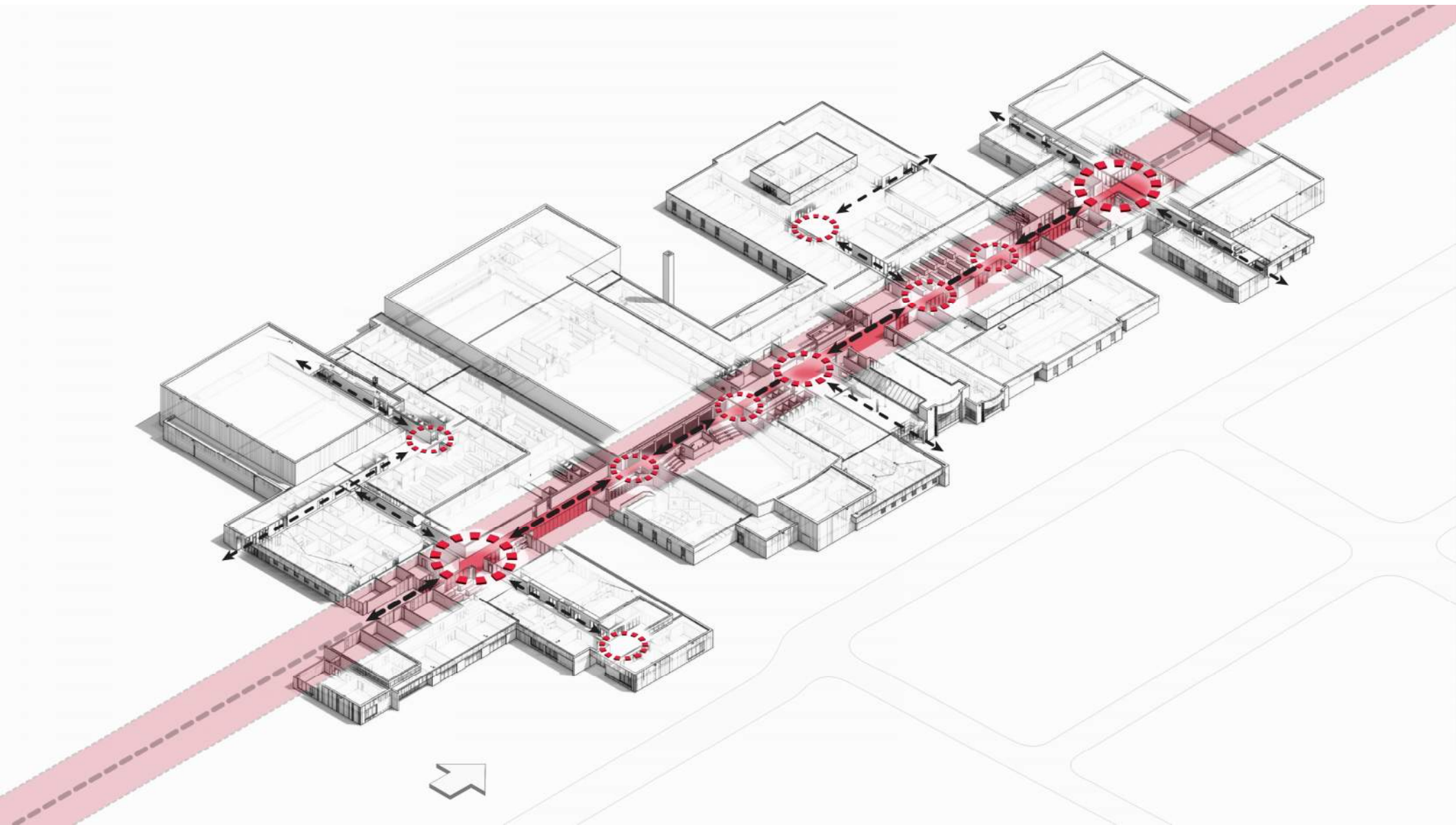
How is the building responding?

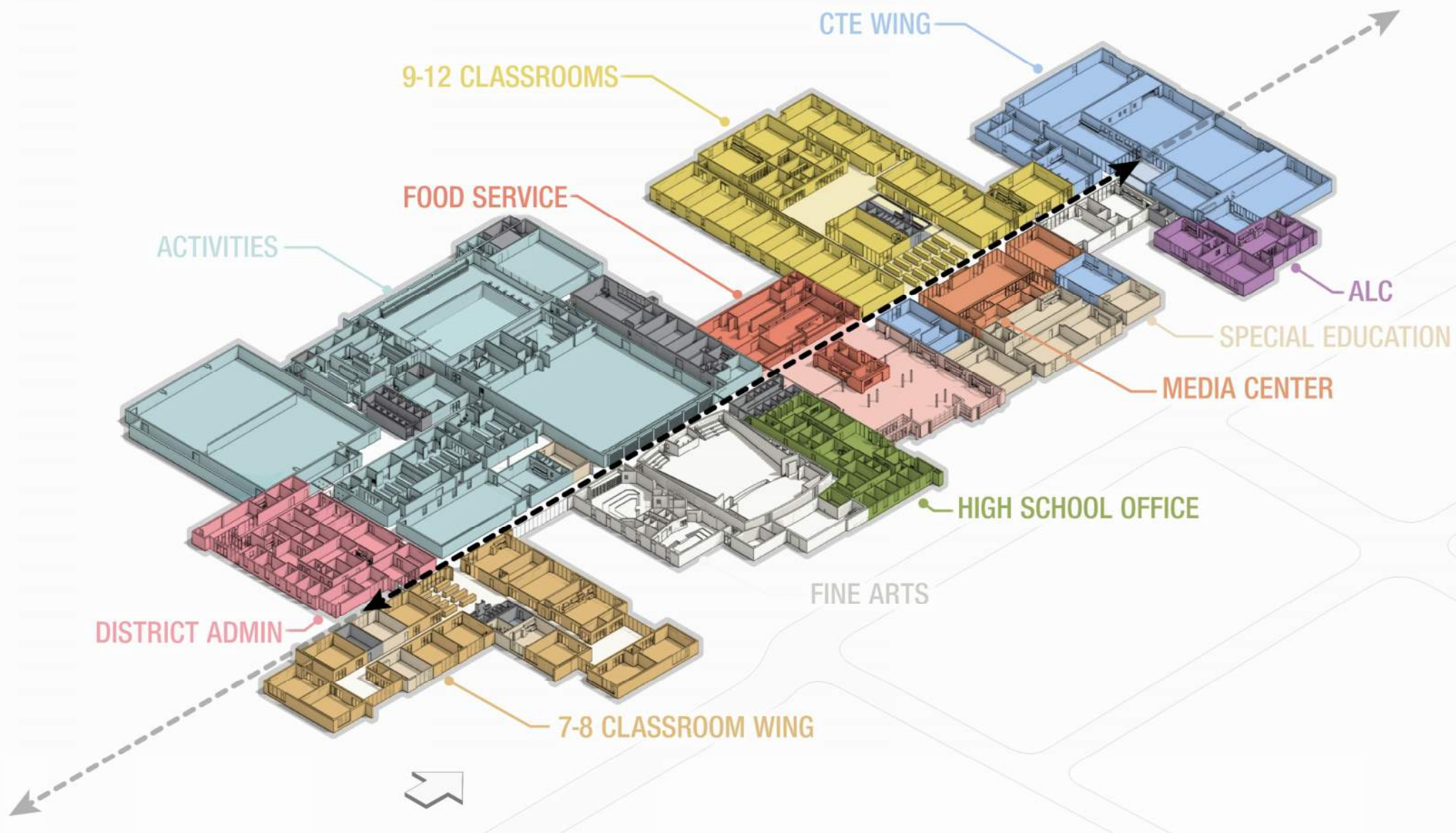










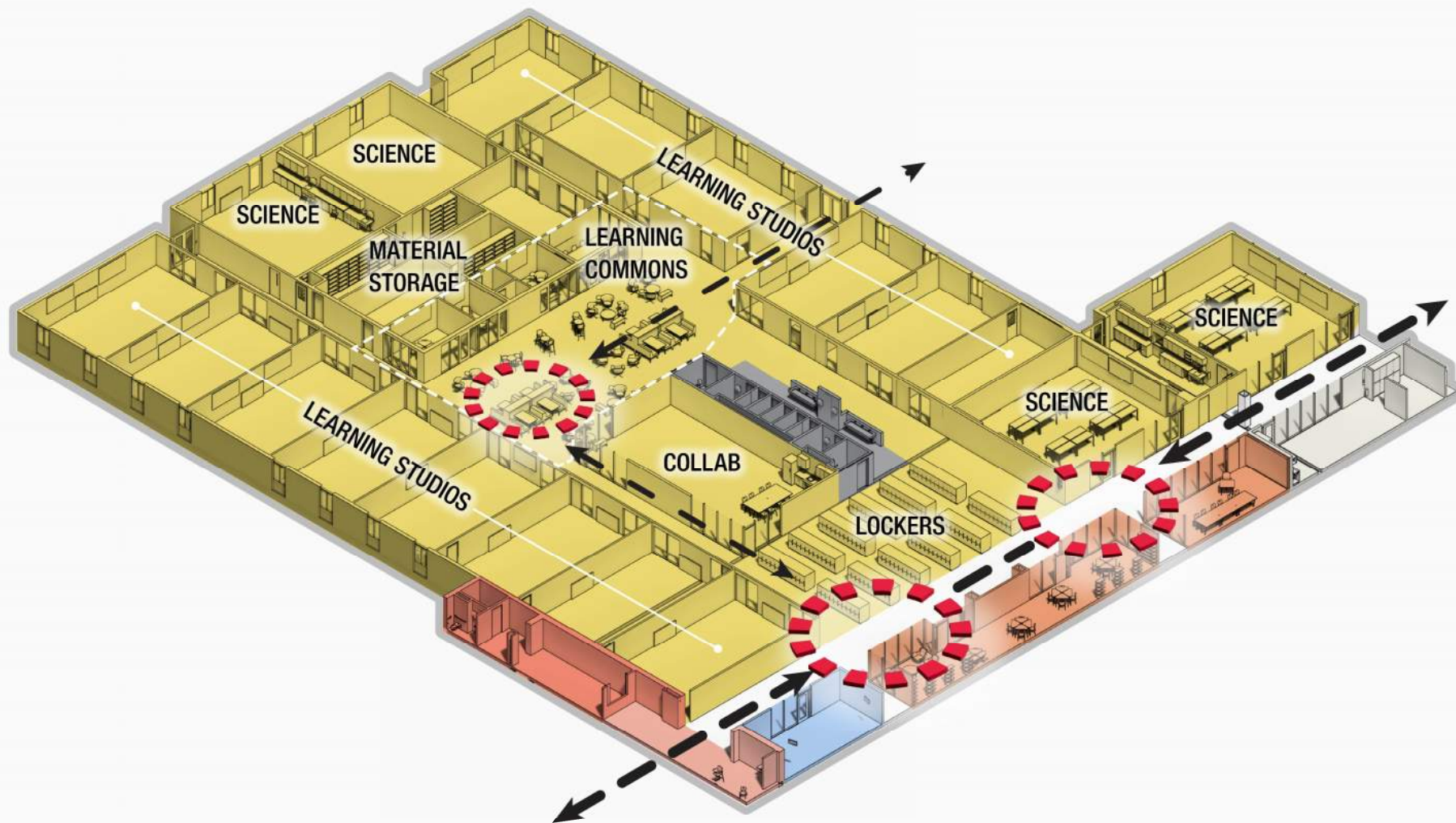


Curious
Endurance
ER Strong
Caring
Integrity
Considerate



Positive
Ambition
Capable
Honesty
Compassion
Determined







STAFF COLLABORATION FURNITURE



KI - STRIVE, POLY BACK AND SEAT



KI - SERENADE TABLE, 42"H, 42X144



STEELCASE - GROUPWORK, 29"H ROUND



STEELCASE - ANSWER, 57"H PANELS



STEELCASE - LOCKERS, 50"H



7-8 STAFF COLLABORATION



9-12 STAFF COLLABORATION

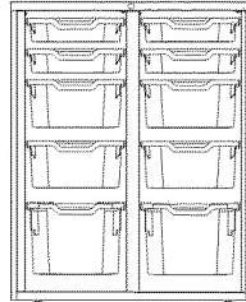
GENERAL CLASSROOM FURNITURE



(2) KI - RUCKUS MOBILE CUBBY CABINET,
42"H, LAMINATE TOP, DOORS



(1) KI - RUCKUS MOBILE TOTE CABINET,
42"H, LAMINATE TOP, DOORS, (4) 3",
(4) 6", (2) 9" TOTES



TOTE LAYOUT (4) 3", (4) 6",
(2) 9" TOTES



KI - INSTRUCT DESK

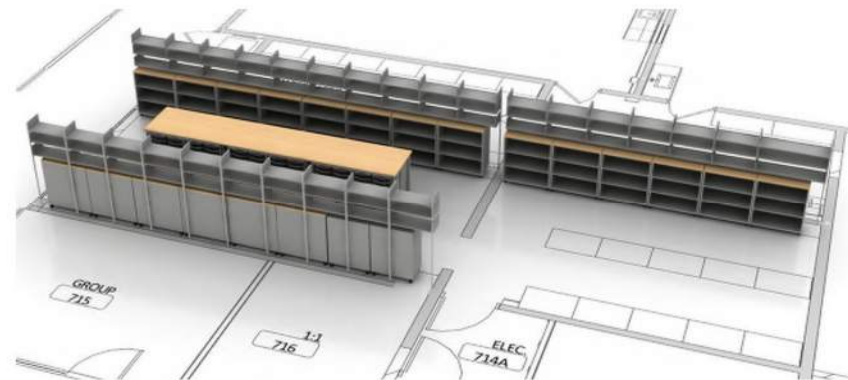


HON - IGNITION 2.0,
ARMLESS, MESH BACK,
CUSHIONED SEAT

MATERIAL STORAGE



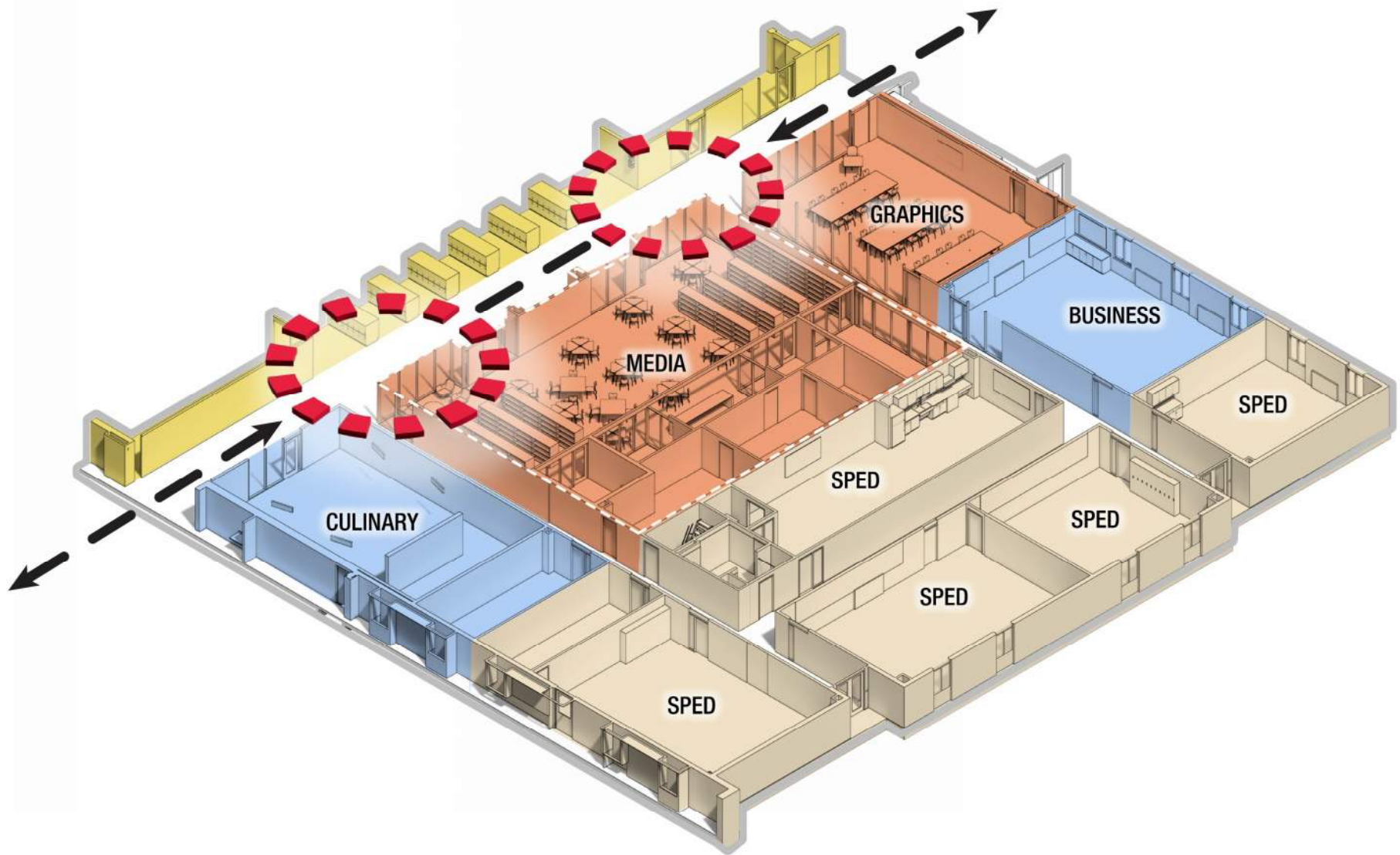
7-8 MATERIAL STORAGE ROOM
- 2 CARTS PER TEACHER
- ABOUT 22 LINEAL FEET OF STORAGE PER TEACHER



9-12 MATERIAL STORAGE ROOM
- 2 CARTS PER TEACHER
- ABOUT 27 LINEAL FEET OF STORAGE PER TEACHER



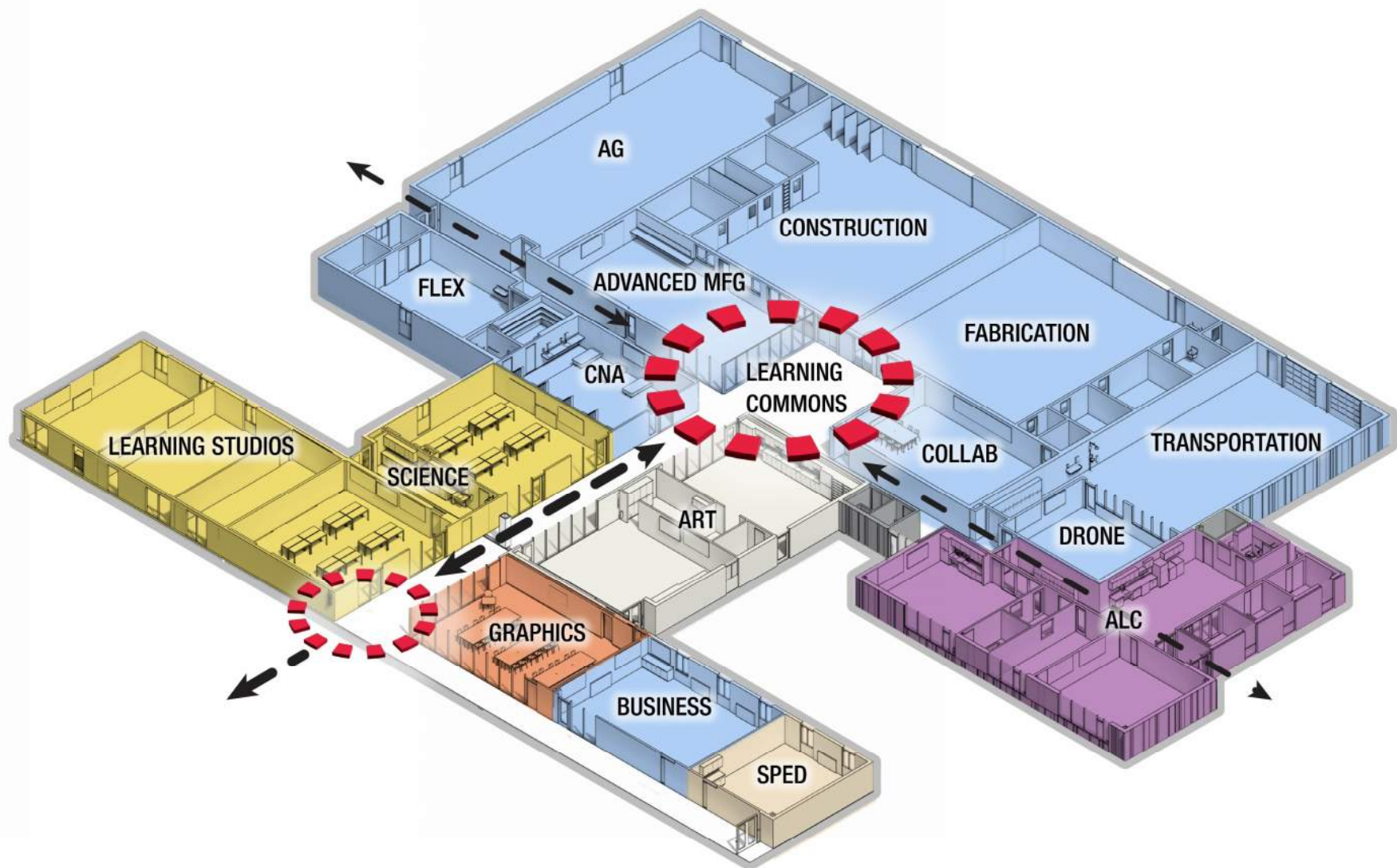


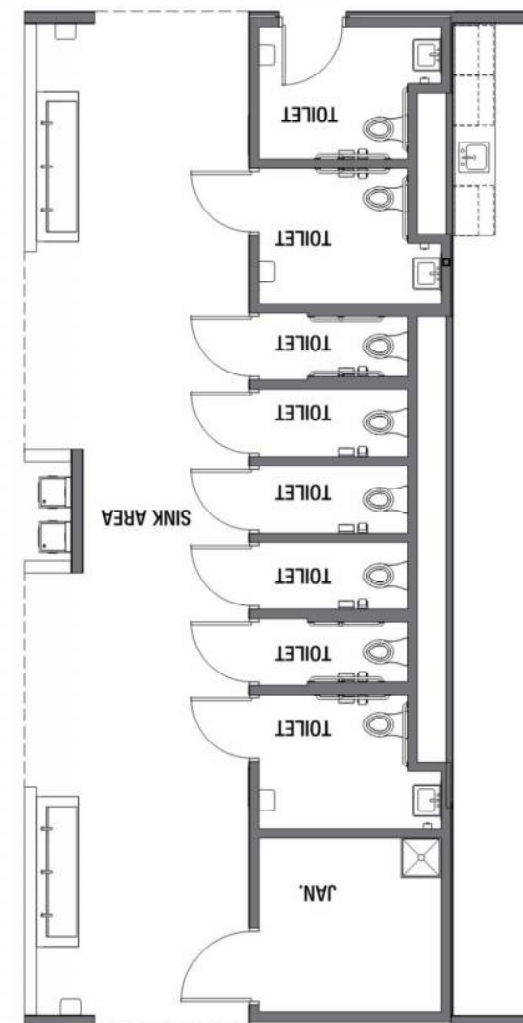




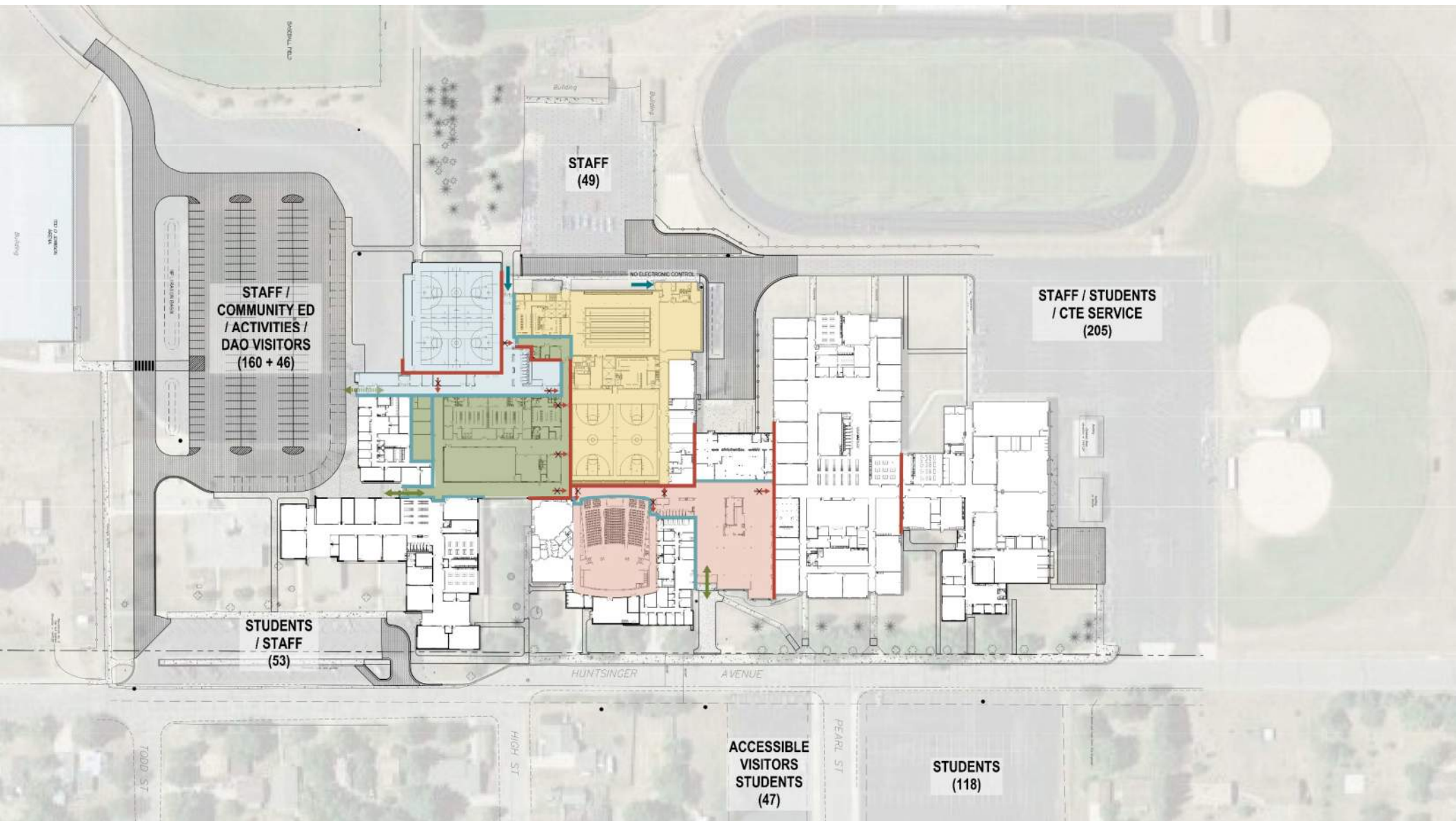


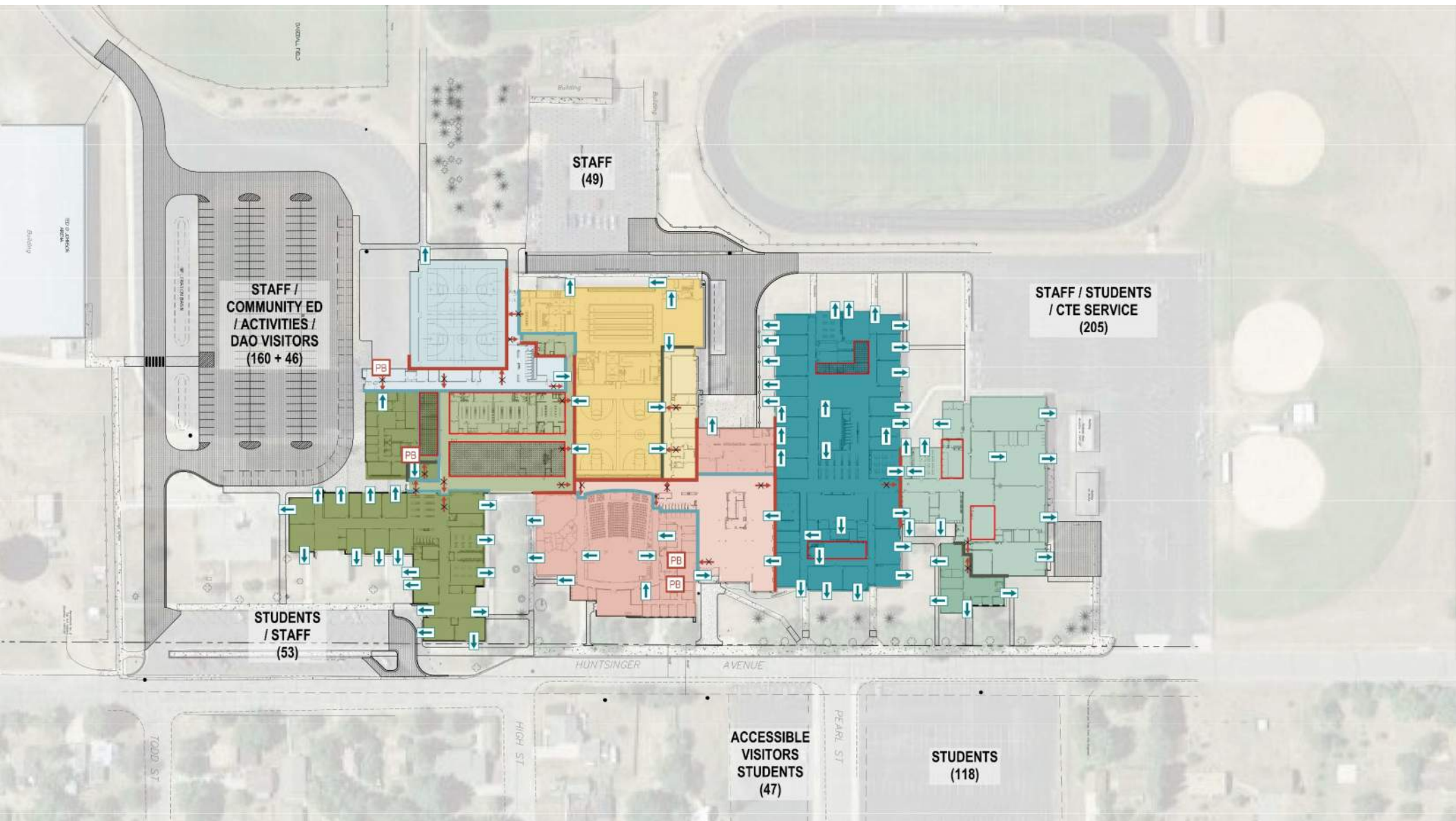












THE PLAN

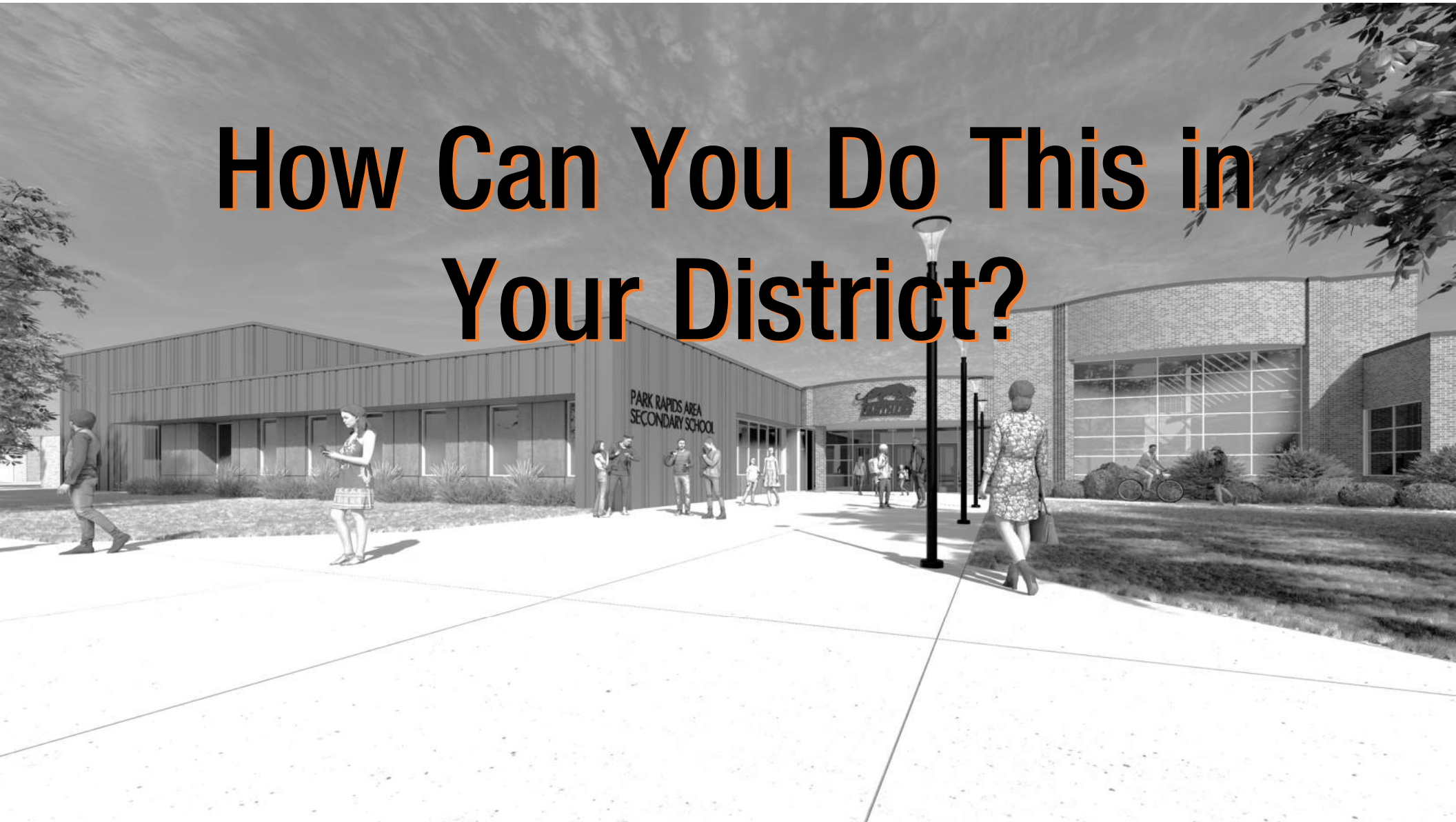


**IMPROVE
BUILDING
SECURITY**

**RENOVATE &
EXPAND THE
HIGH SCHOOL**

**ADD SPACE
FOR CTE**

How Can You Do This in Your District?



ASK YOURSELF....

- What does your community value?
- Does your facility support your strategic plan?
- What are the opportunities in your existing facility?



QUESTIONS?





THANK YOU

